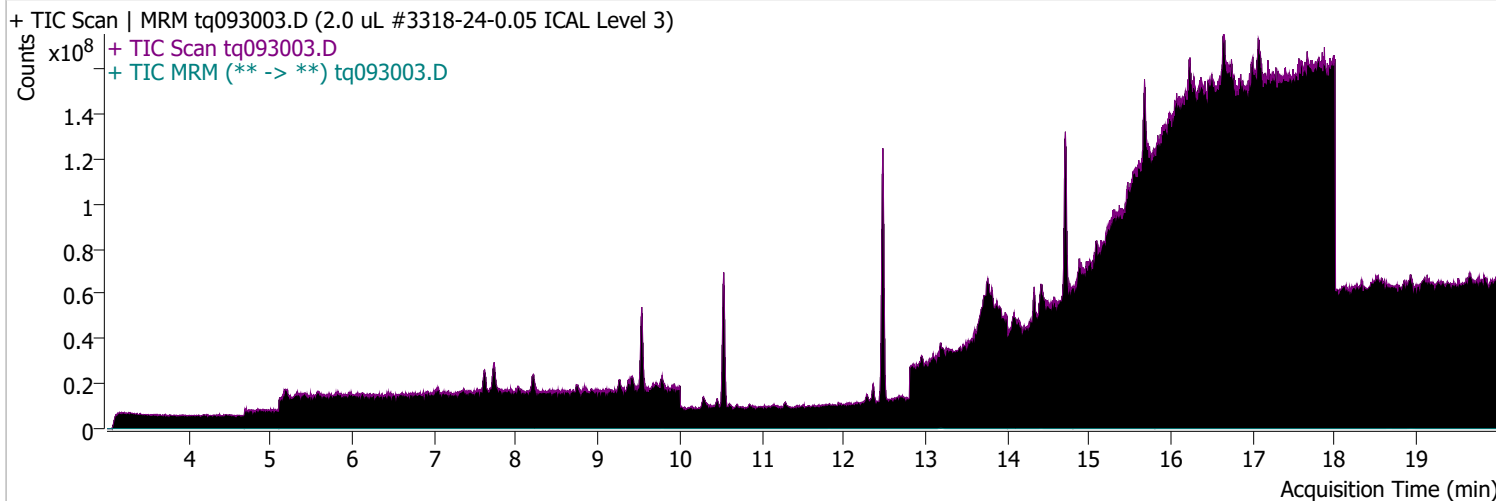


Quantitative Analysis Sample Report

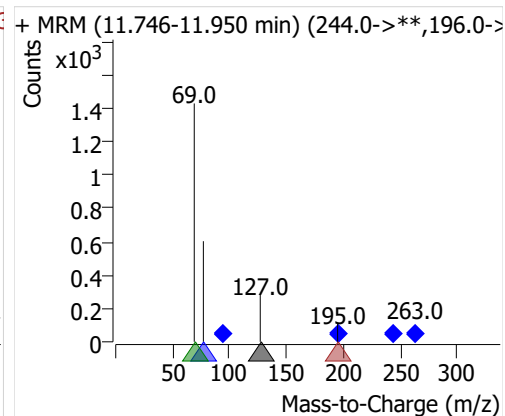
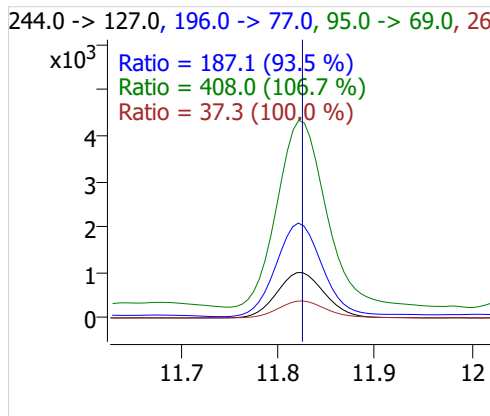
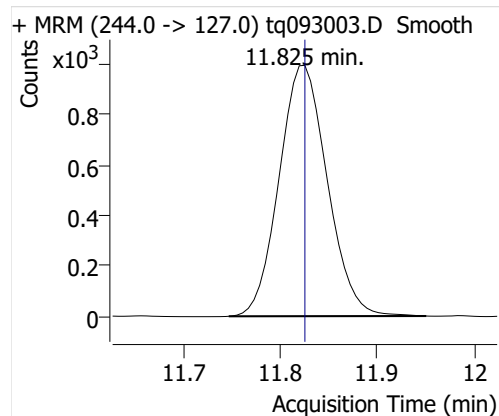
Batch Path D:\MassHunter\GCMS\1\data\30sep22\QuantResults\30sep22.batch.bin
Analysis Time 10/3/2022 10:17 AM **Analyst Name** DESKTOP-R0LAL7E\analyst
Report Time 10/20/2022 2:35:36 PM **Reporter Name** ES-AREA1\US32_USR_INS22923
Last Calib Update 10/3/2022 8:55 AM **Batch State** Processed
Quant Batch Version 10.1 **Quant Report Version** 10.1
Acq. Time 9/30/2022 3:47 PM **Data File** tq093003.D
Sample Type Cal **Sample Name** 2.0 uL #3318-24-0.05 ICAL Level 3
Dilution 1 **Acq. Method** tq22m0831marks

Sample Chromatogram

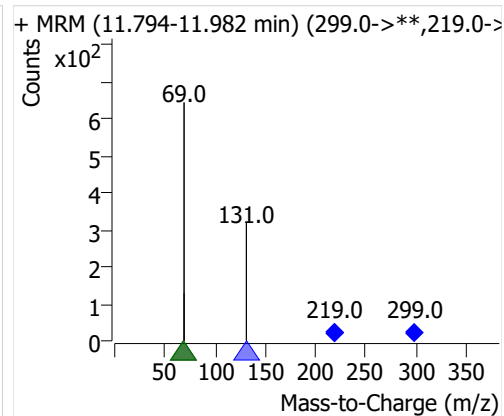
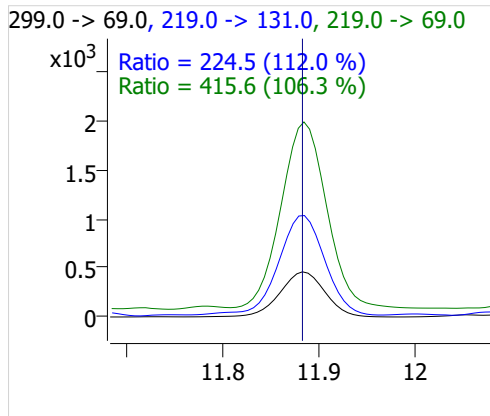
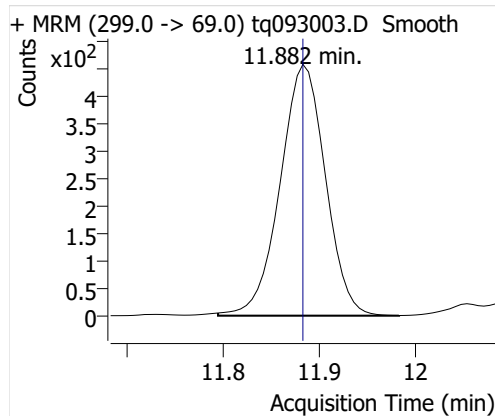


Compound	ISTD	RT	Resp.	ISTD Resp.	Resp. Ratio	Final Conc	Units
4:2 FTOH	6:2 FTOH-C13	11.825	3448	64831	0.0532	0.0967	ng
5:2sFTOH	6:2 FTOH-C13	11.882	1495	64831	0.0231	0.0975	ng
7:2sFTOH	6:2 FTOH-C13	13.183	2997	64831	0.0462	0.0971	ng
6:2 FTOH	6:2 FTOH-C13	13.217	7598	64831	0.1172	0.1161	ng
8:2 FTOH-C13	6:2 FTOH-C13	14.412	22416	64831	0.3458	0.9909	ng
8:2 FTOH	6:2 FTOH-C13	14.413	2081	64831	0.0321	0.1155	ng
10:2 FTOH	6:2 FTOH-C13	15.477	735	64831	0.0113	0.1085	ng
12:2 FTOH	6:2 FTOH-C13	16.458	2480	64831	0.0382	0.1008	ng
NMeFOSA	6:2 FTOH-C13	18.662	1865	64831	0.0288	0.1026	ng
NEtFOSA	6:2 FTOH-C13	18.931	7205	64831	0.1111	0.0905	ng

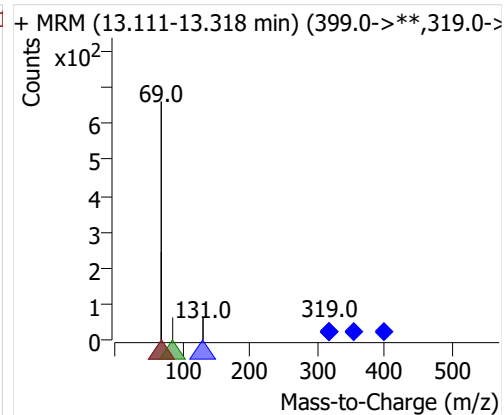
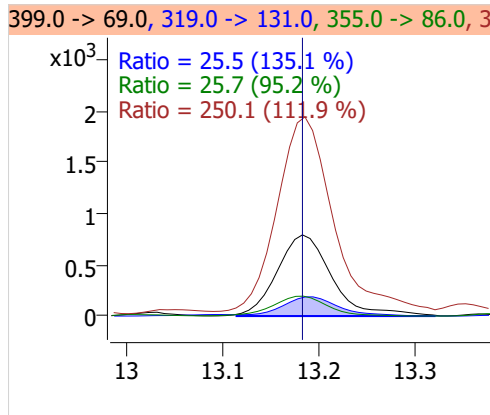
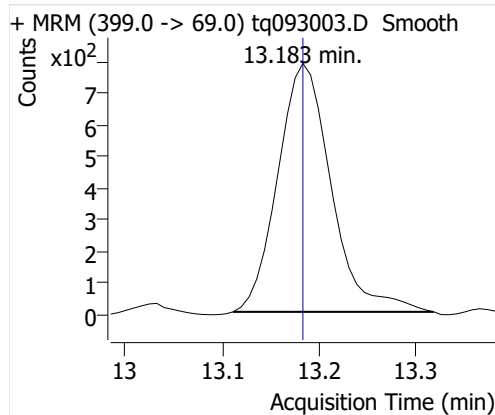
4:2 FTOH



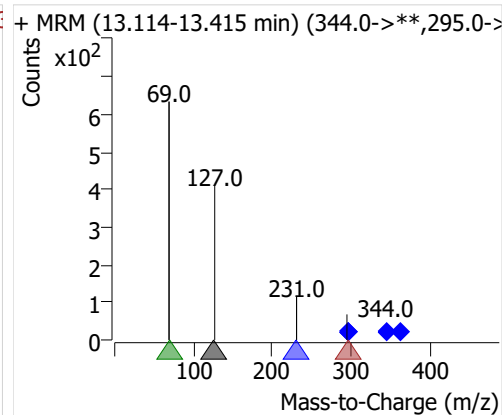
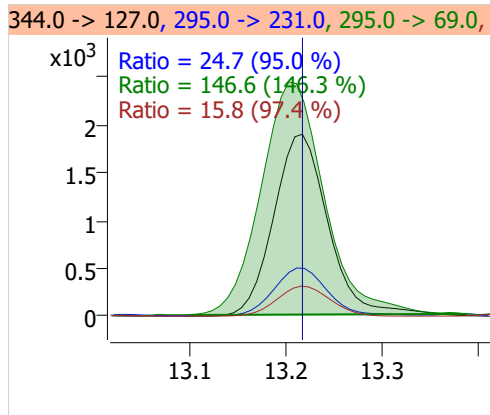
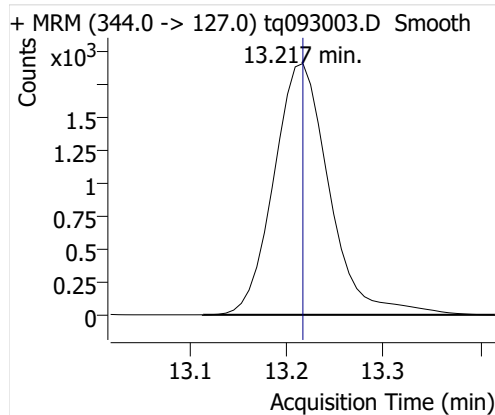
5:2sFTOH



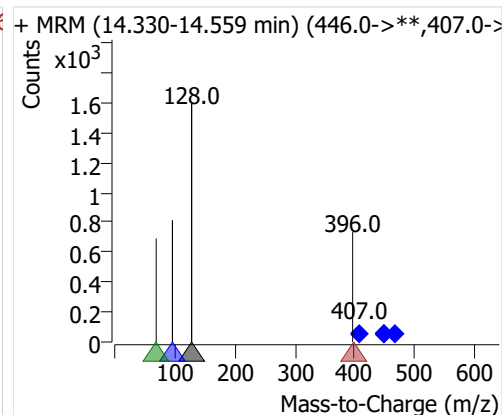
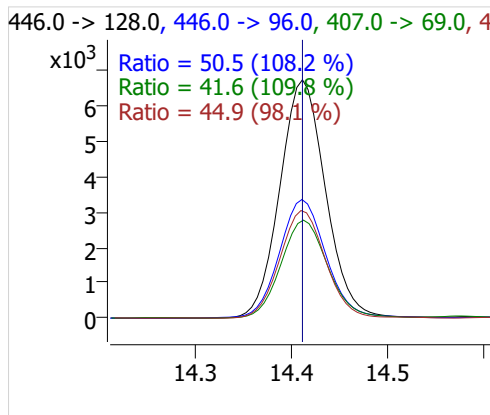
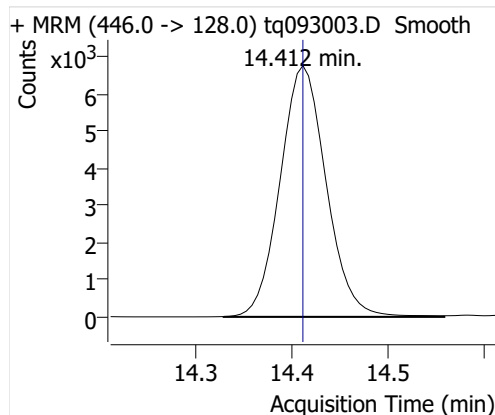
7:2sFTOH



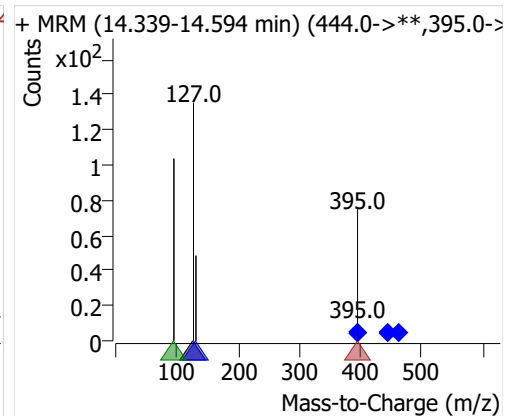
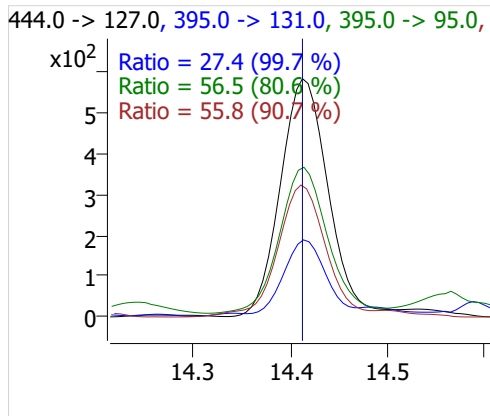
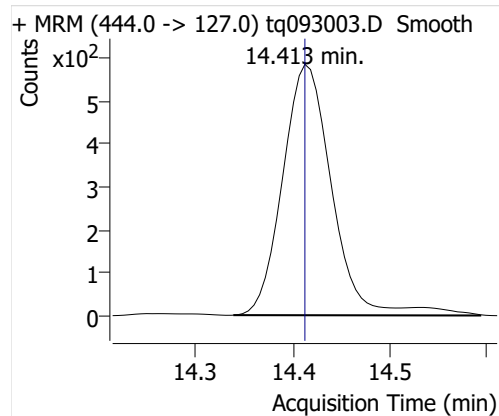
6:2 FTOH



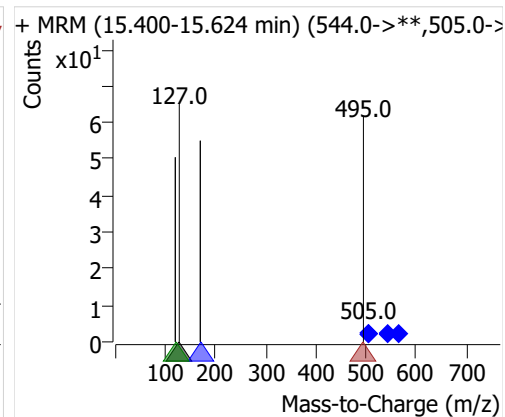
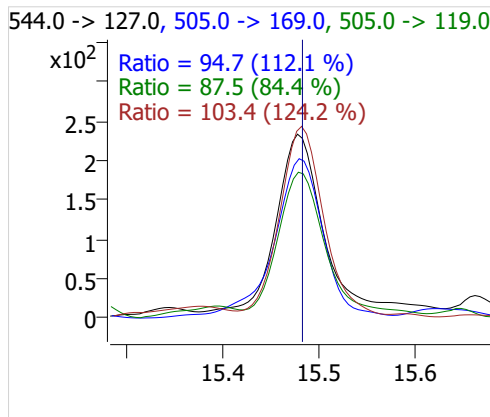
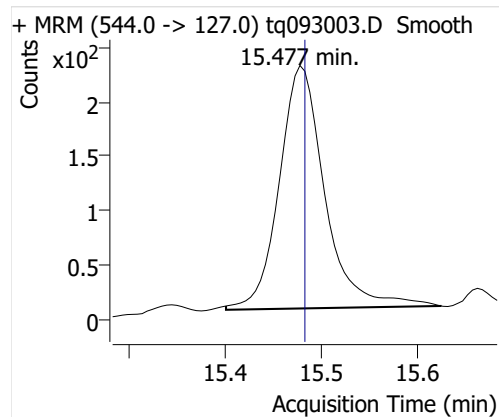
8:2 FTOH-C13



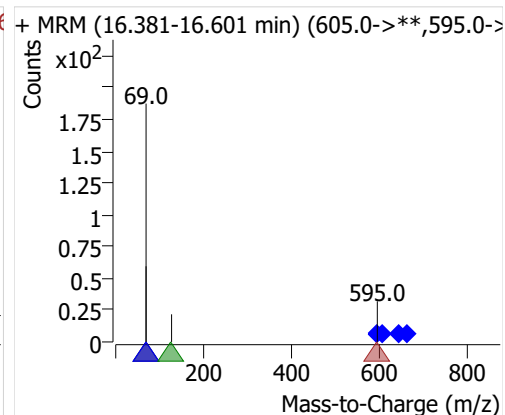
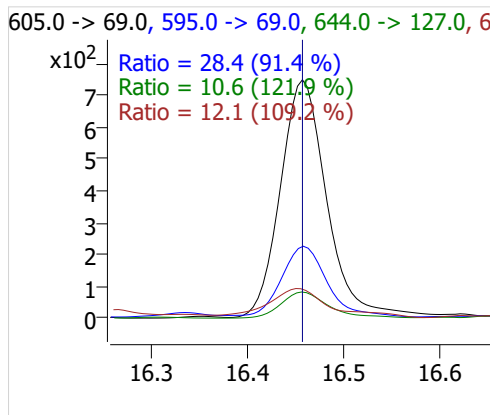
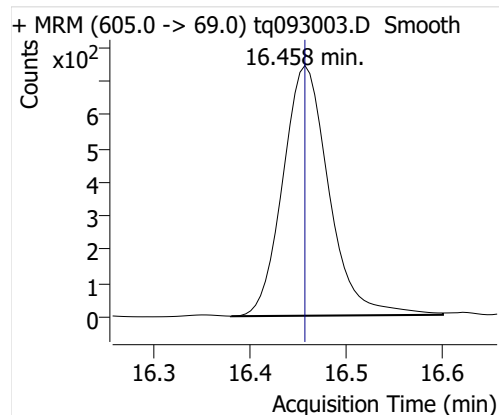
8:2 FTOH



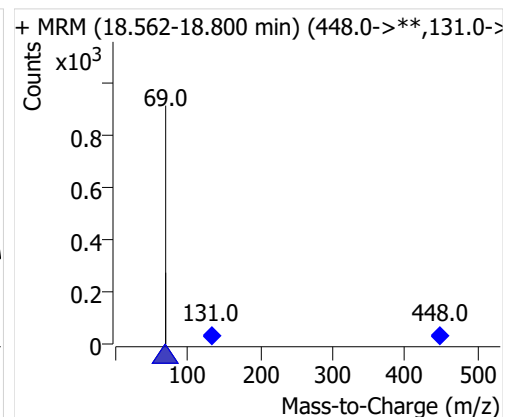
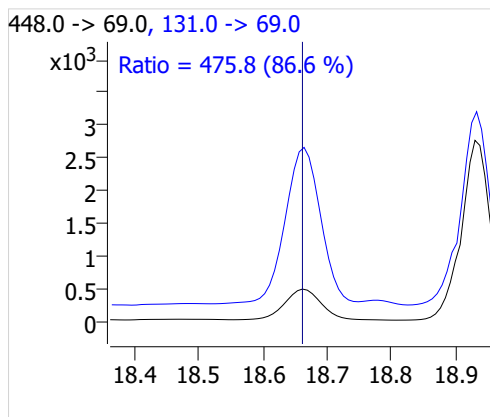
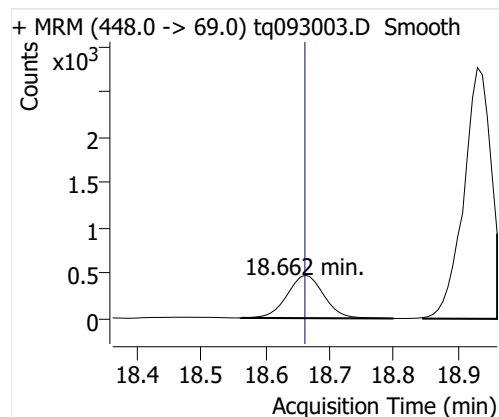
10:2 FTOH



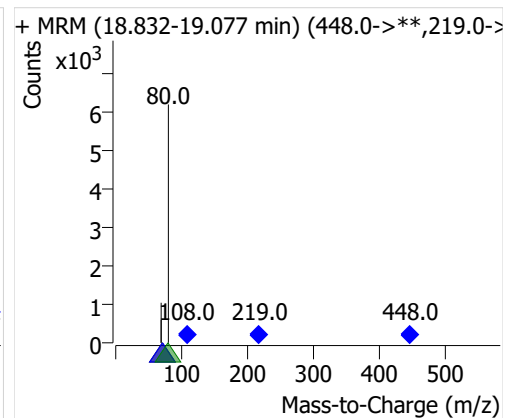
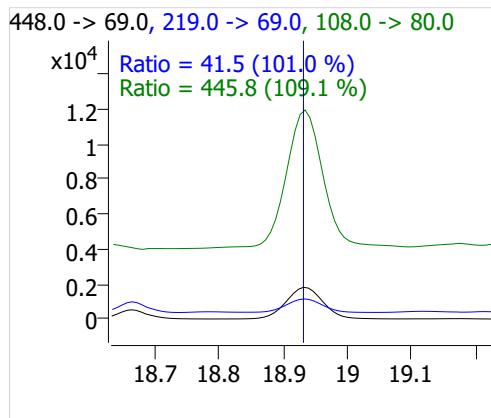
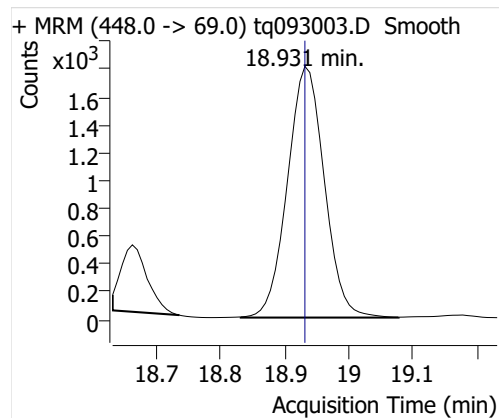
12:2 FTOH



NMeFOSA



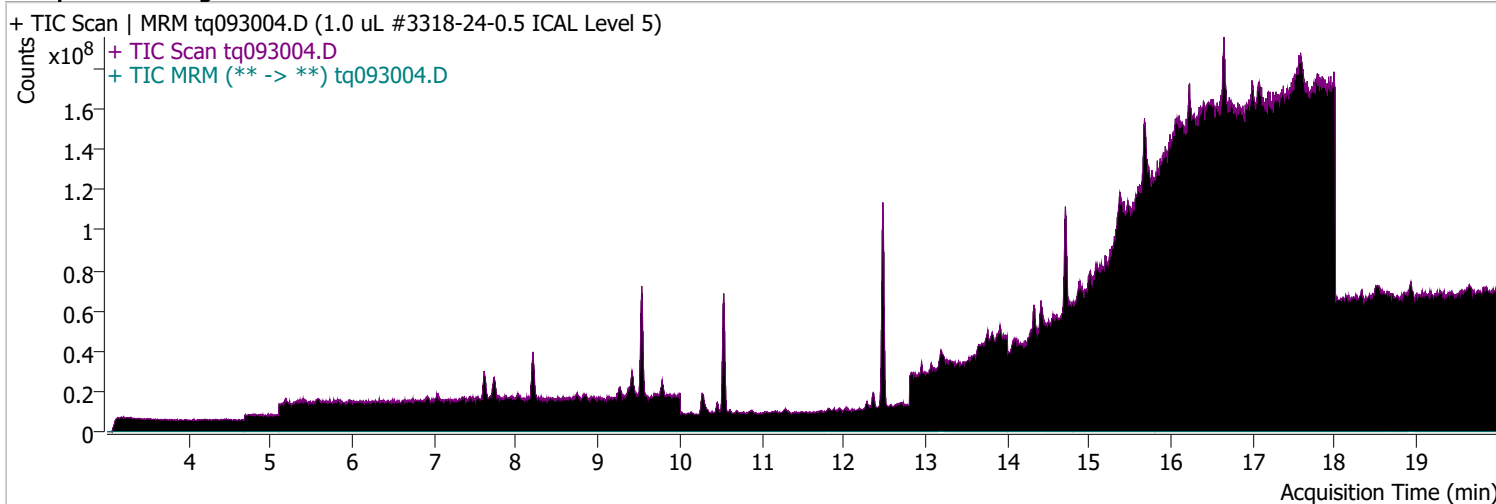
NetFOSA



Quantitative Analysis Sample Report

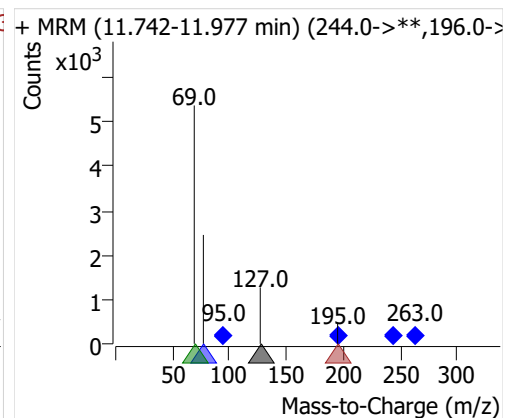
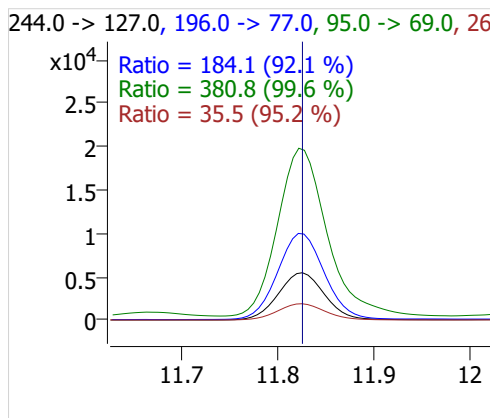
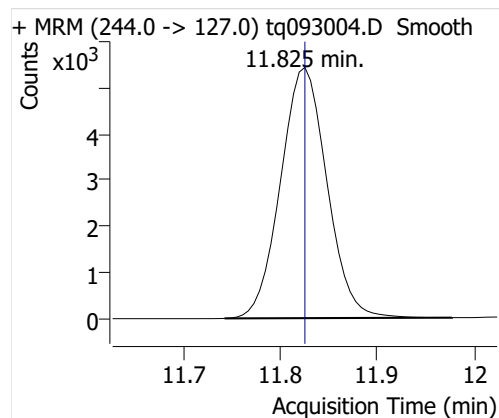
Batch Path D:\MassHunter\GCMS\1\data\30sep22\QuantResults\30sep22.batch.bin
Analysis Time 10/3/2022 10:17 AM **Analyst Name** DESKTOP-R0LAL7E\analyst
Report Time 10/20/2022 2:35:38 PM **Reporter Name** ES-AREA1\US32_USR_INS22923
Last Calib Update 10/3/2022 8:55 AM **Batch State** Processed
Quant Batch Version 10.1 **Quant Report Version** 10.1
Acq. Time 9/30/2022 4:10 PM **Data File** tq093004.D
Sample Type Cal **Sample Name** 1.0 uL #3318-24-0.5 ICAL Level 5
Dilution 1 **Acq. Method** tq22m0831marks

Sample Chromatogram

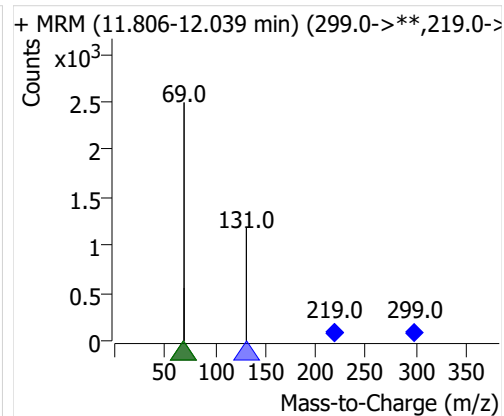
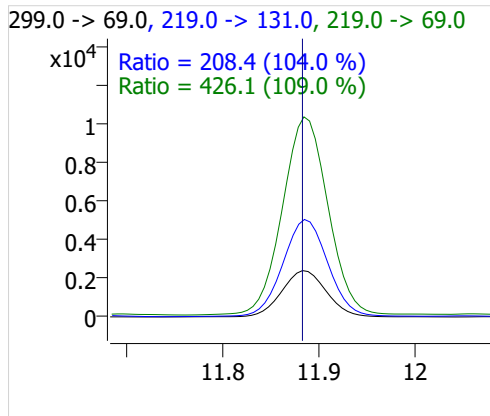
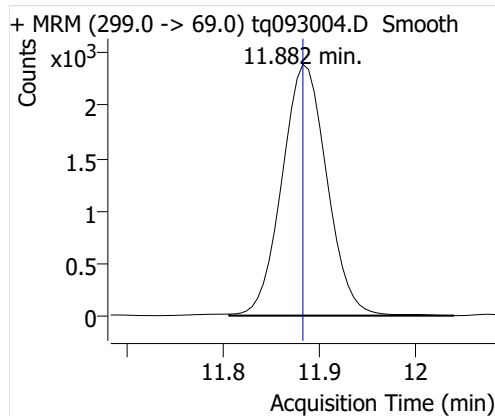


Compound	ISTD	RT	Resp.	ISTD Resp.	Resp. Ratio	Final Conc	Units
4:2 FTOH	6:2 FTOH-C13	11.825	18147	64503	0.2813	0.5118	ng
5:2sFTOH	6:2 FTOH-C13	11.882	7756	64503	0.1202	0.5081	ng
7:2sFTOH	6:2 FTOH-C13	13.183	15556	64503	0.2412	0.5068	ng
6:2 FTOH	6:2 FTOH-C13	13.217	32389	64503	0.5021	0.4973	ng
8:2 FTOH-C13	6:2 FTOH-C13	14.412	21623	64503	0.3352	0.9607	ng
8:2 FTOH	6:2 FTOH-C13	14.413	8534	64503	0.1323	0.4762	ng
10:2 FTOH	6:2 FTOH-C13	15.477	3341	64503	0.0518	0.4957	ng
12:2 FTOH	6:2 FTOH-C13	16.458	12183	64503	0.1889	0.4975	ng
NMeFOSA	6:2 FTOH-C13	18.662	10158	64503	0.1575	0.5615	ng
NEtFOSA	6:2 FTOH-C13	18.931	43775	64503	0.6787	0.5528	ng

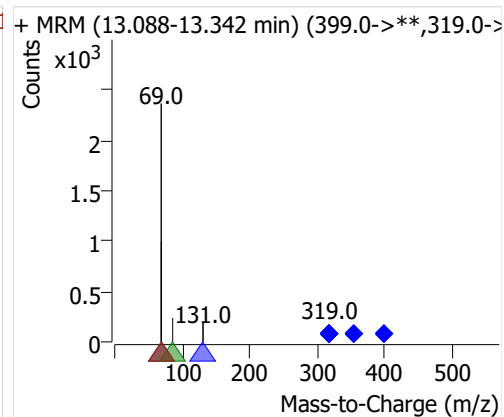
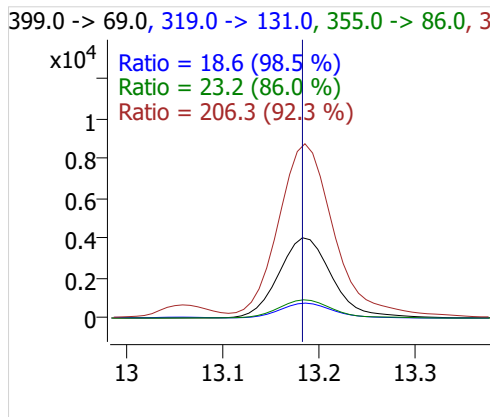
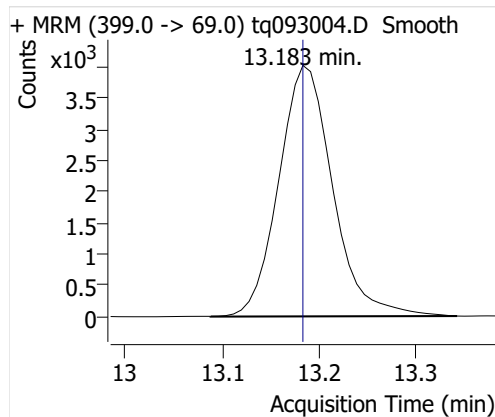
4:2 FTOH



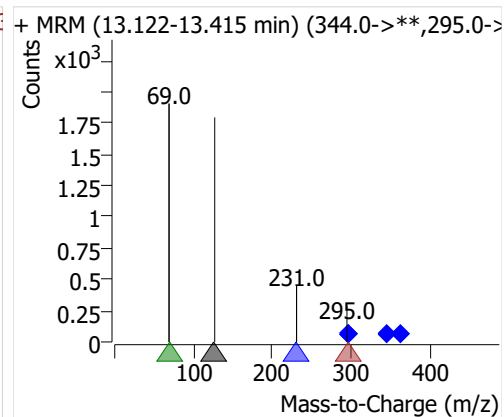
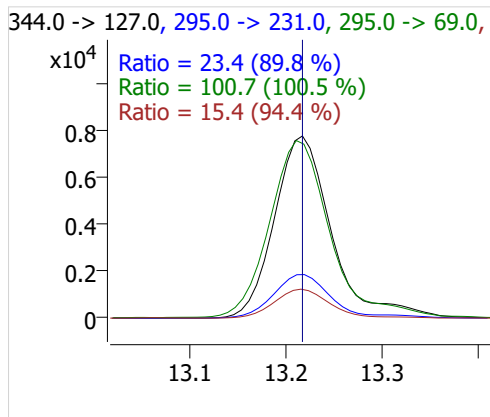
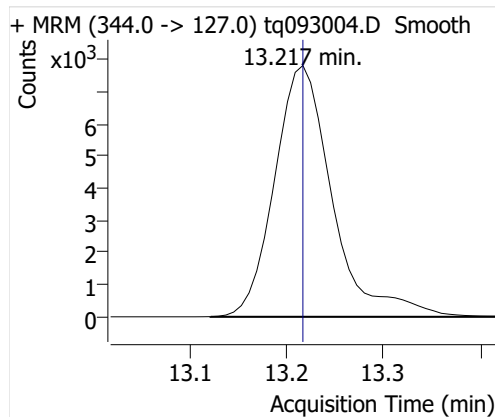
5:2sFTOH



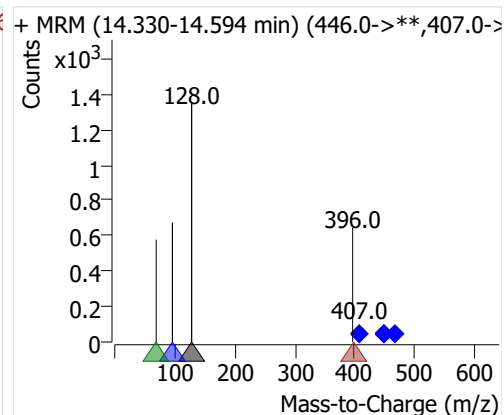
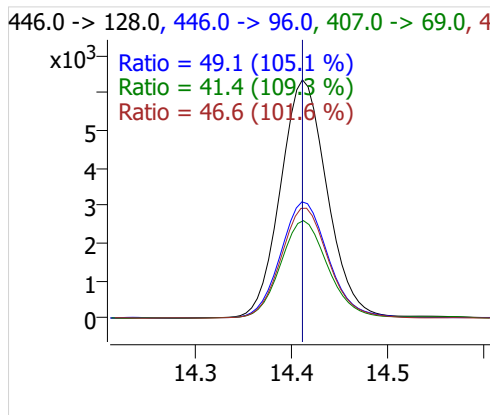
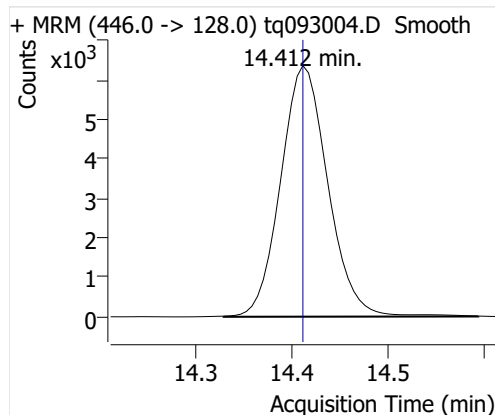
7:2sFTOH



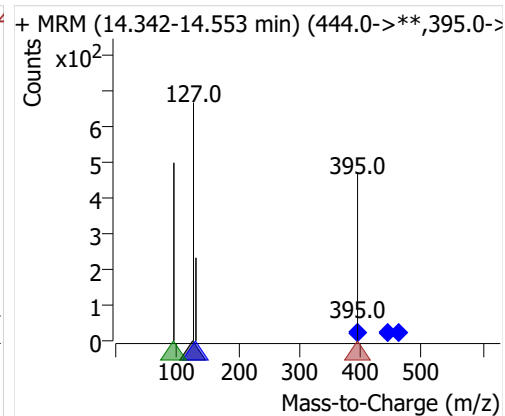
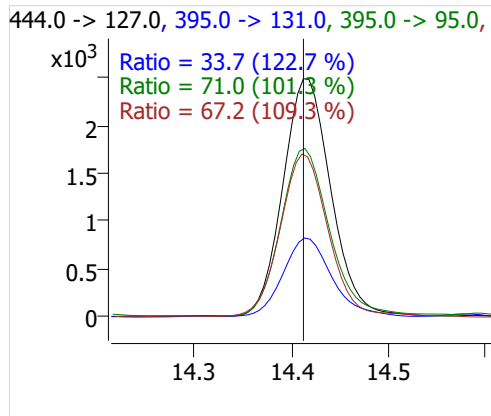
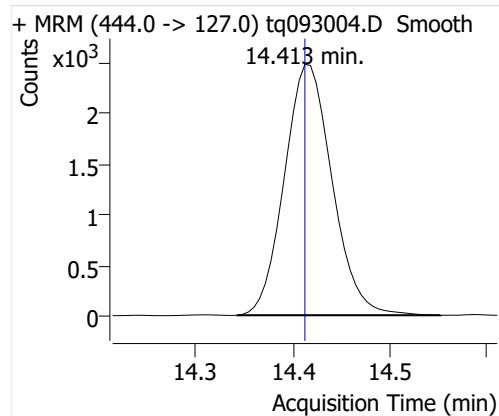
6:2 FTOH



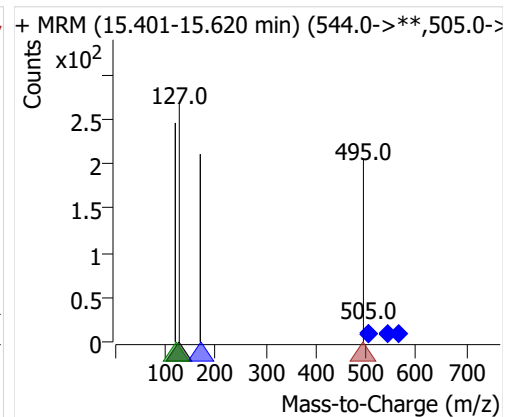
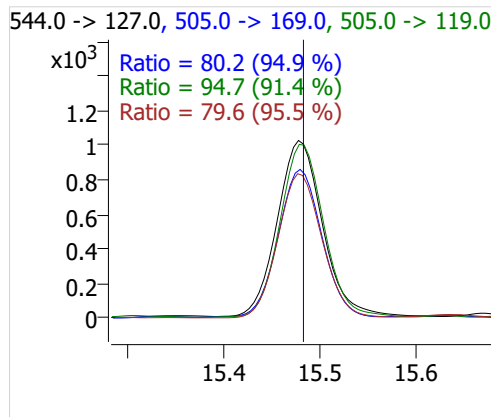
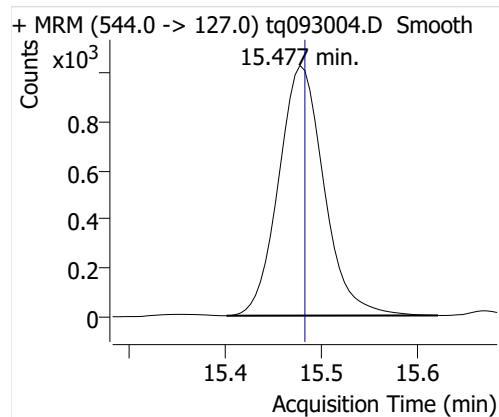
8:2 FTOH-C13



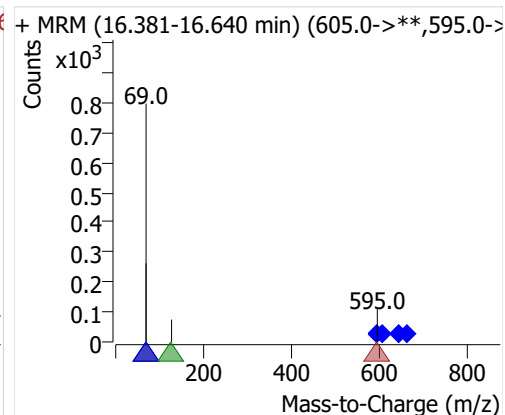
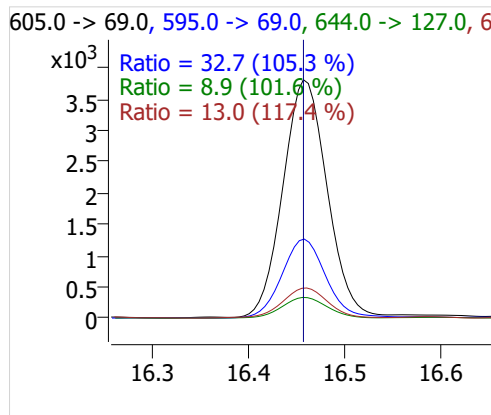
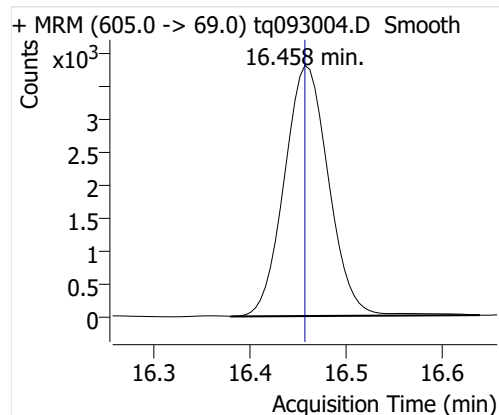
8:2 FTOH



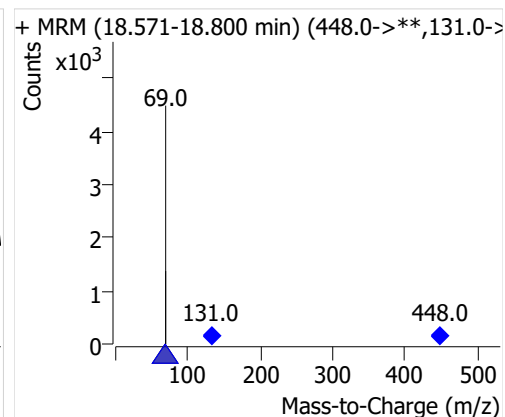
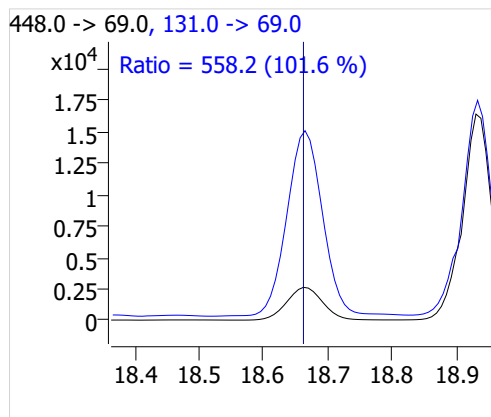
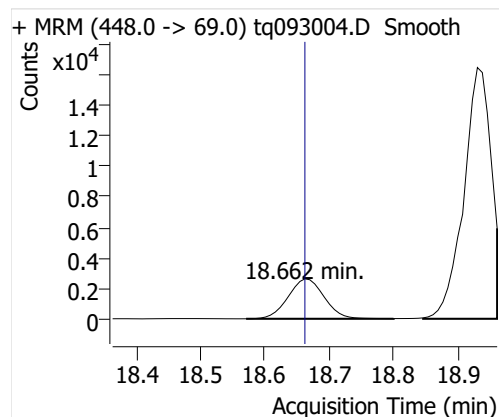
10:2 FTOH



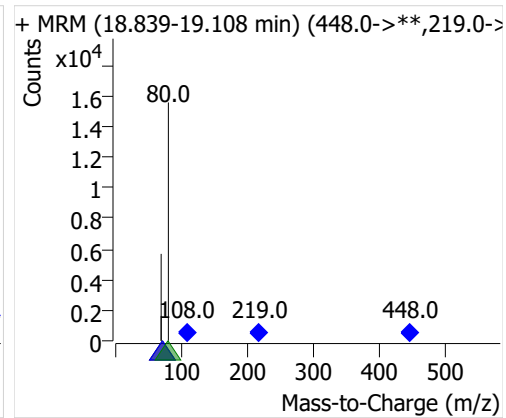
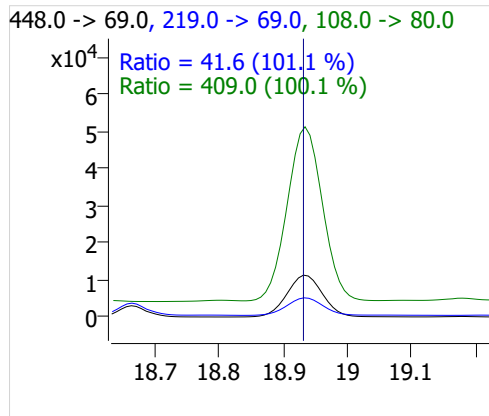
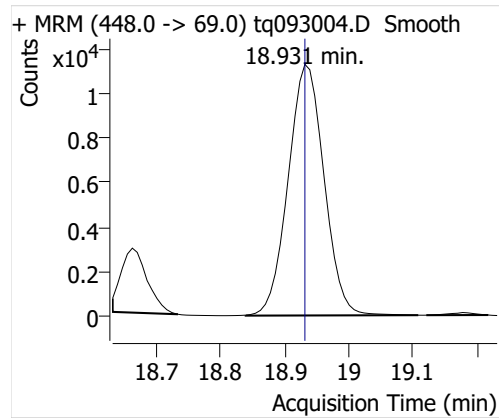
12:2 FTOH



NMeFOSA



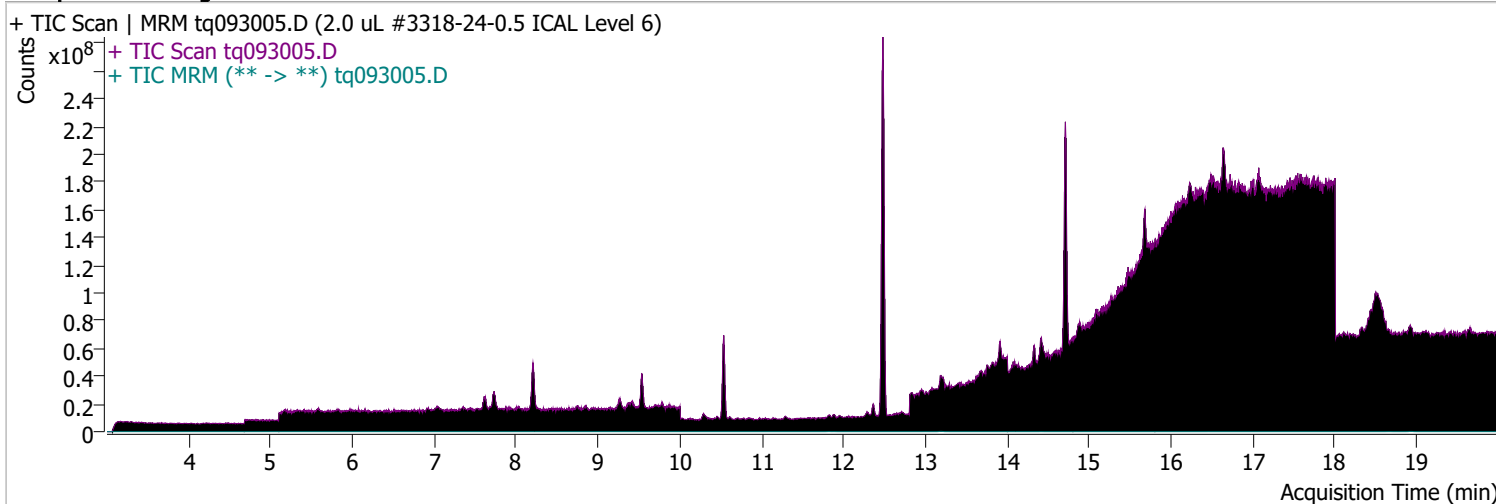
NETFOSA



Quantitative Analysis Sample Report

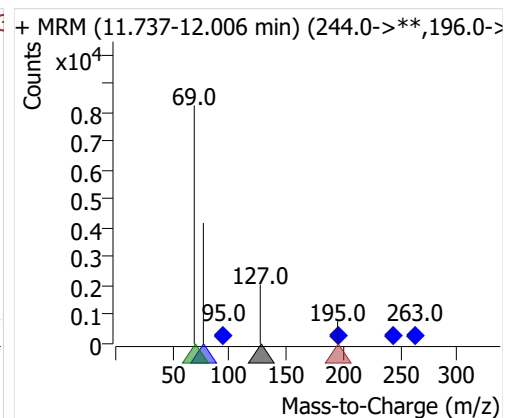
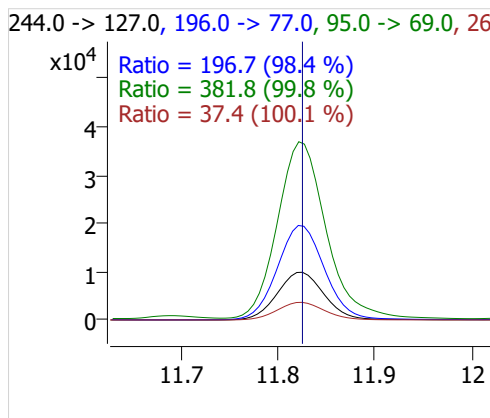
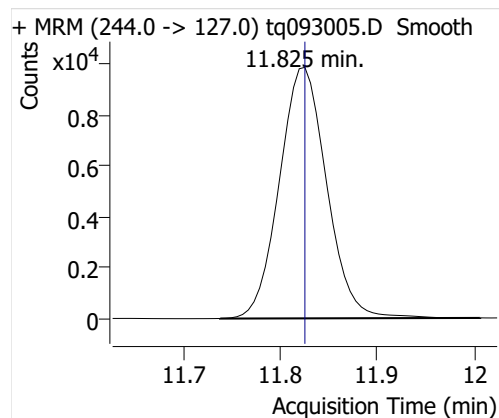
Batch Path D:\MassHunter\GCMS\1\data\30sep22\QuantResults\30sep22.batch.bin
Analysis Time 10/3/2022 10:17 AM **Analyst Name** DESKTOP-R0LAL7E\analyst
Report Time 10/20/2022 2:35:39 PM **Reporter Name** ES-AREA1\US32_USR_INS22923
Last Calib Update 10/3/2022 8:55 AM **Batch State** Processed
Quant Batch Version 10.1 **Quant Report Version** 10.1
Acq. Time 9/30/2022 4:34 PM **Data File** tq093005.D
Sample Type Cal **Sample Name** 2.0 uL #3318-24-0.5 ICAL Level 6
Dilution 1 **Acq. Method** tq22m0831marks

Sample Chromatogram

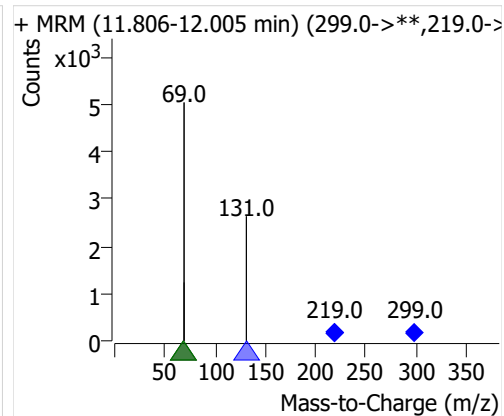
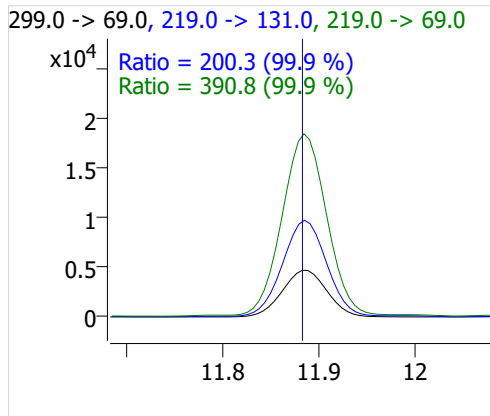
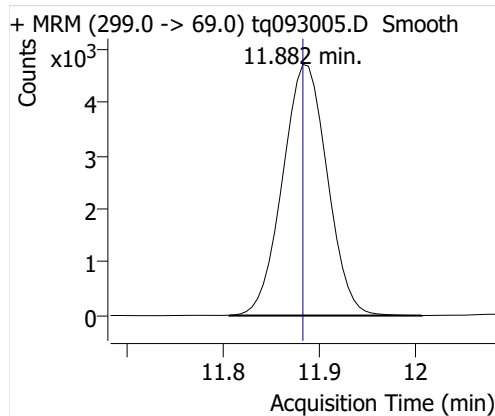


Compound	ISTD	RT	Resp.	ISTD Resp.	Resp. Ratio	Final Conc	Units
4:2 FTOH	6:2 FTOH-C13	11.825	33628	60309	0.5576	1.0144	ng
5:2sFTOH	6:2 FTOH-C13	11.882	15170	60309	0.2515	1.0629	ng
7:2sFTOH	6:2 FTOH-C13	13.183	30524	60309	0.5061	1.0635	ng
6:2 FTOH	6:2 FTOH-C13	13.217	59455	60309	0.9858	0.9763	ng
8:2 FTOH-C13	6:2 FTOH-C13	14.412	21742	60309	0.3605	1.0332	ng
8:2 FTOH	6:2 FTOH-C13	14.413	16365	60309	0.2713	0.9767	ng
10:2 FTOH	6:2 FTOH-C13	15.482	6191	60309	0.1027	0.9825	ng
12:2 FTOH	6:2 FTOH-C13	16.458	22444	60309	0.3721	0.9803	ng
NMeFOSA	6:2 FTOH-C13	18.662	13642	60309	0.2262	0.8065	ng
NEtFOSA	6:2 FTOH-C13	18.931	63602	60309	1.0546	0.8590	ng

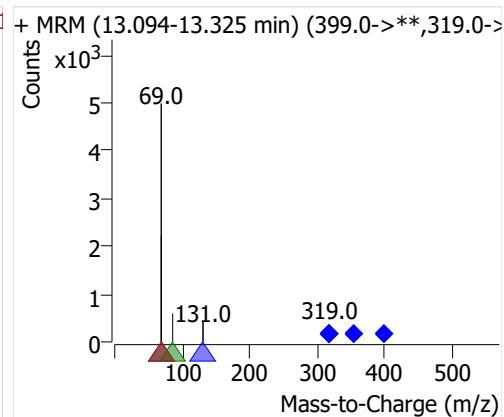
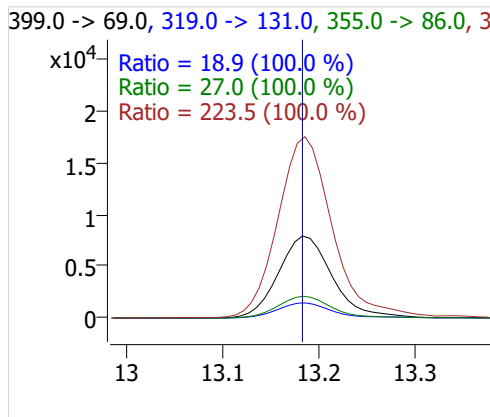
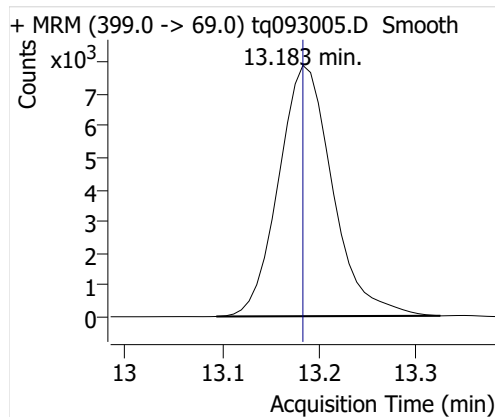
4:2 FTOH



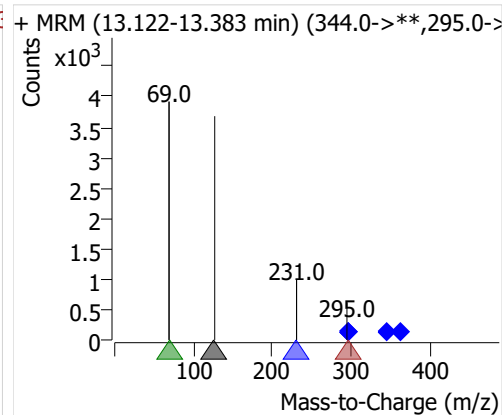
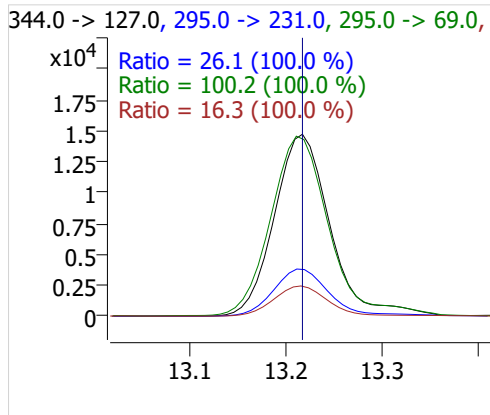
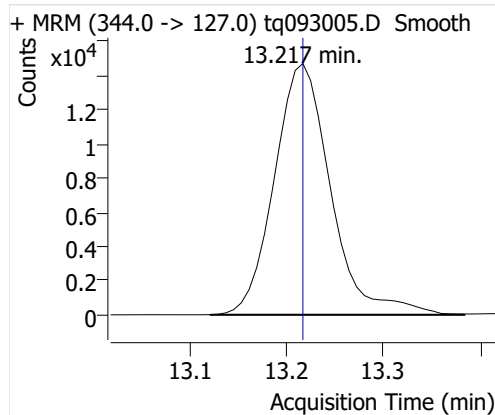
5:2sFTOH



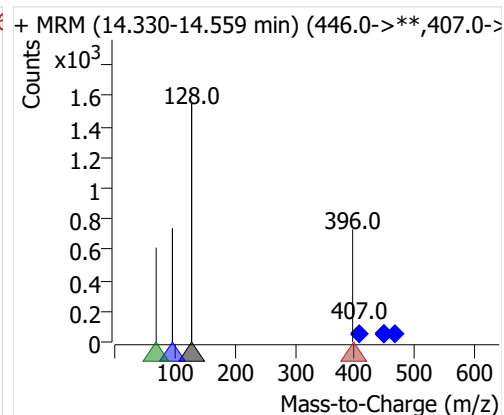
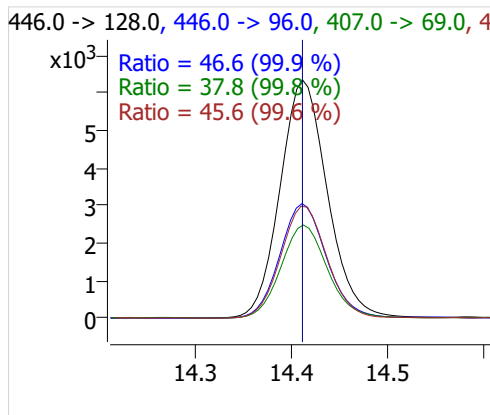
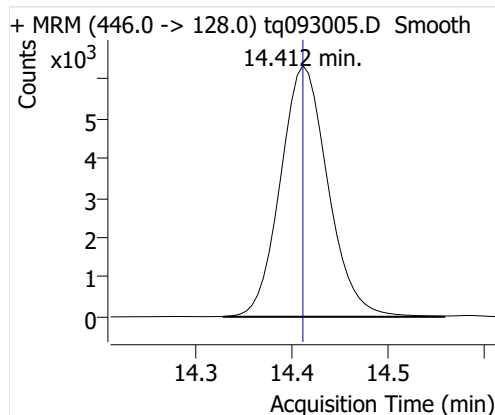
7:2sFTOH



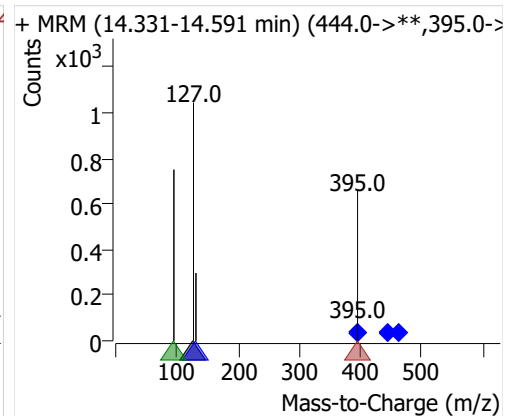
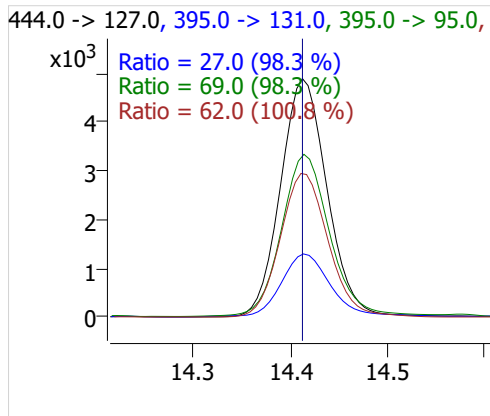
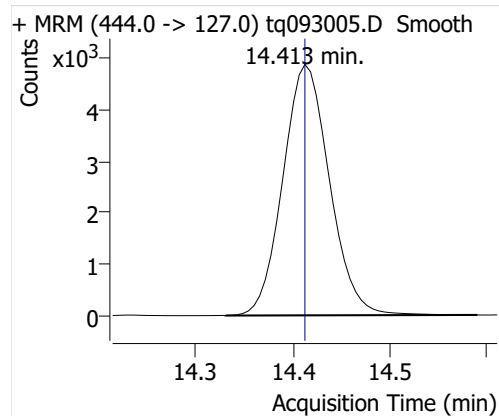
6:2 FTOH



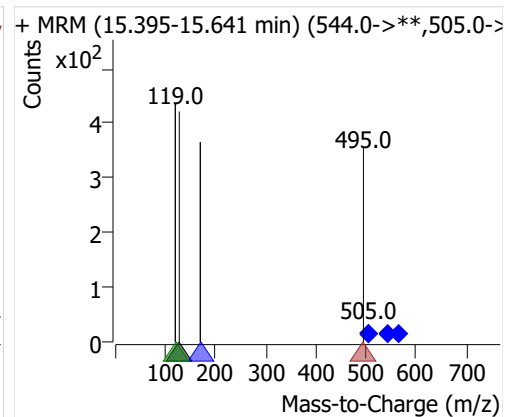
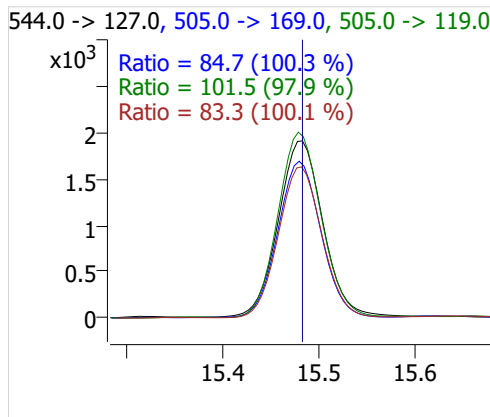
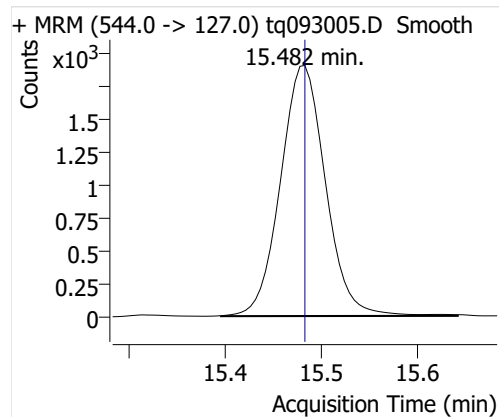
8:2 FTOH-C13



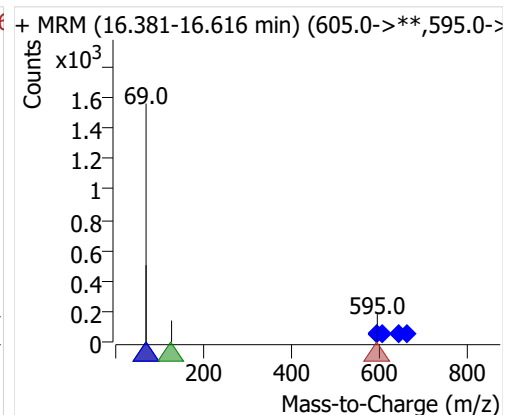
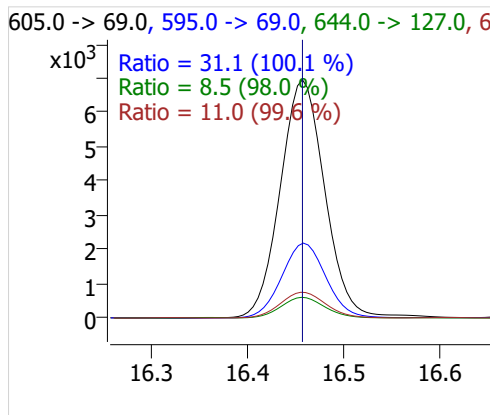
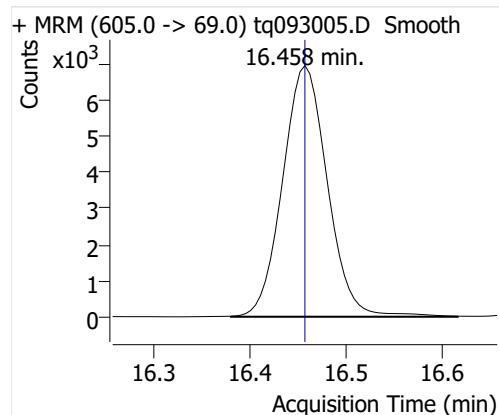
8:2 FTOH



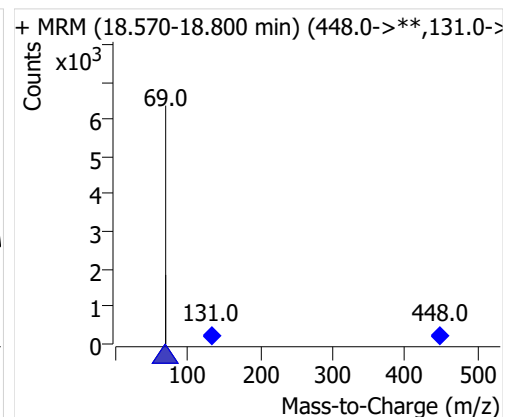
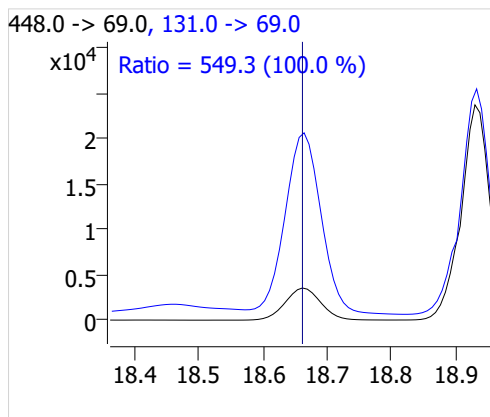
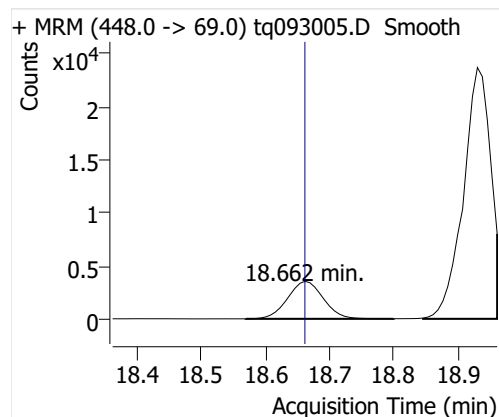
10:2 FTOH



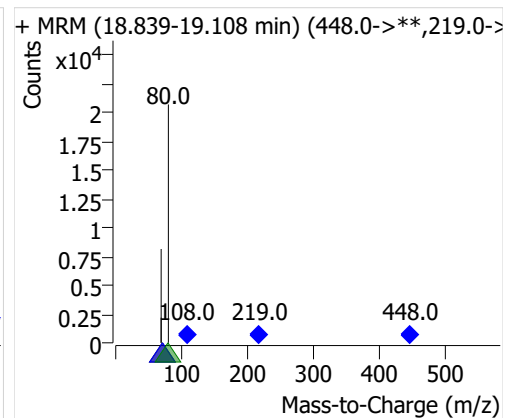
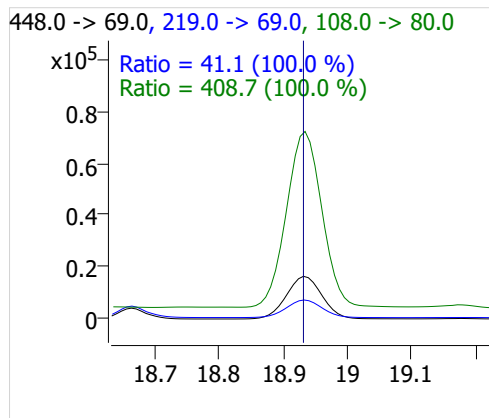
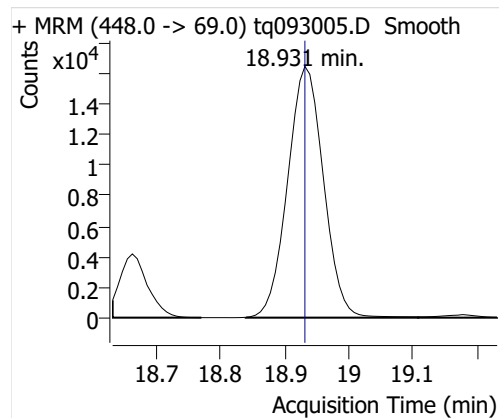
12:2 FTOH



NMeFOSA



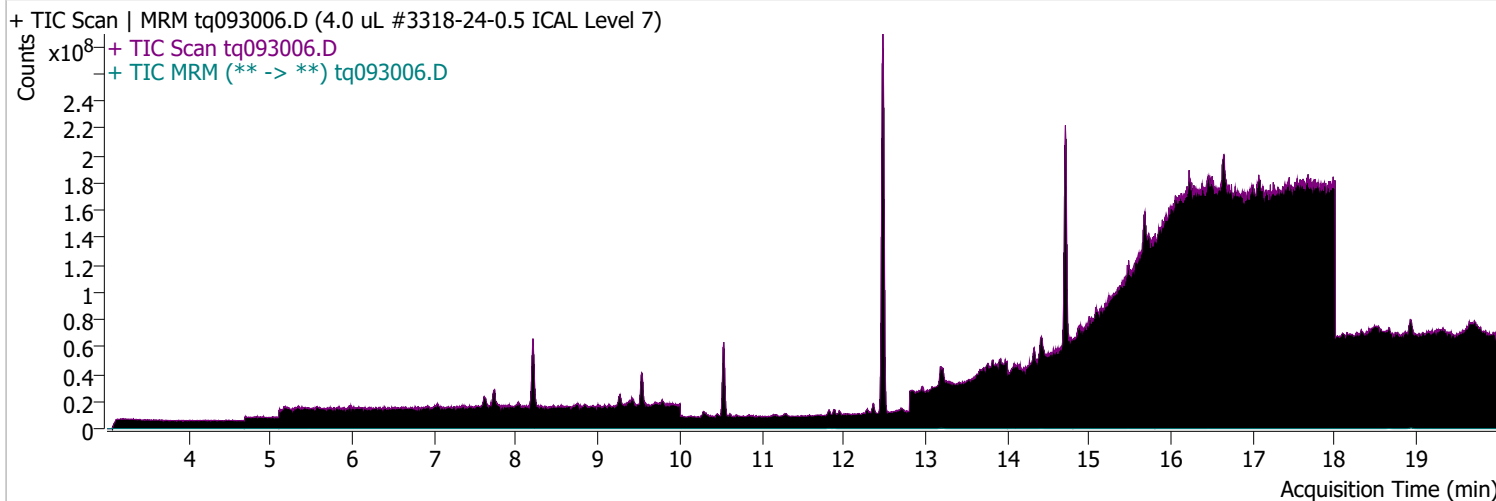
NETFOSA



Quantitative Analysis Sample Report

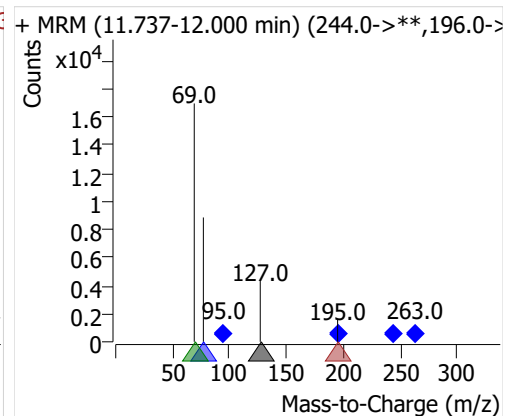
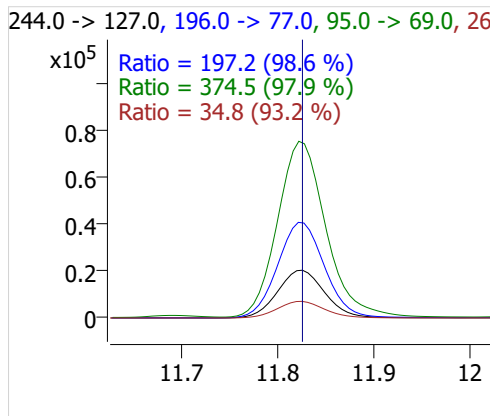
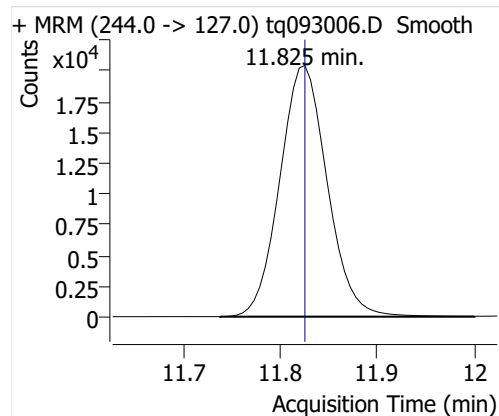
Batch Path D:\MassHunter\GCMS\1\data\30sep22\QuantResults\30sep22.batch.bin
Analysis Time 10/3/2022 10:17 AM **Analyst Name** DESKTOP-R0LAL7E\analyst
Report Time 10/20/2022 2:35:40 PM **Reporter Name** ES-AREA1\US32_USR_INS22923
Last Calib Update 10/3/2022 8:55 AM **Batch State** Processed
Quant Batch Version 10.1 **Quant Report Version** 10.1
Acq. Time 9/30/2022 4:58 PM **Data File** tq093006.D
Sample Type Cal **Sample Name** 4.0 uL #3318-24-0.5 ICAL Level 7
Dilution 1 **Acq. Method** tq22m0831marks

Sample Chromatogram

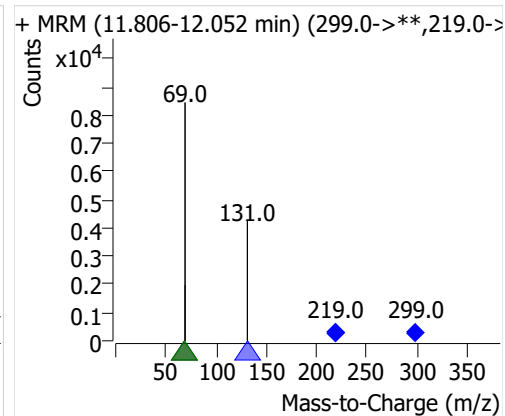
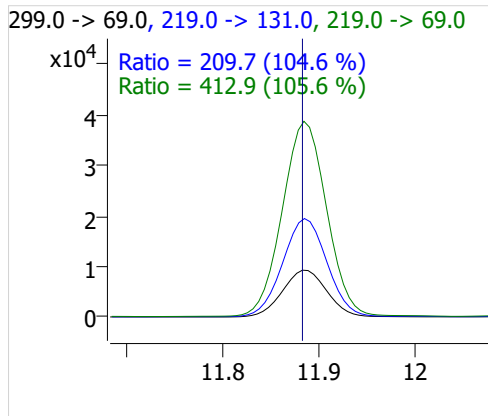
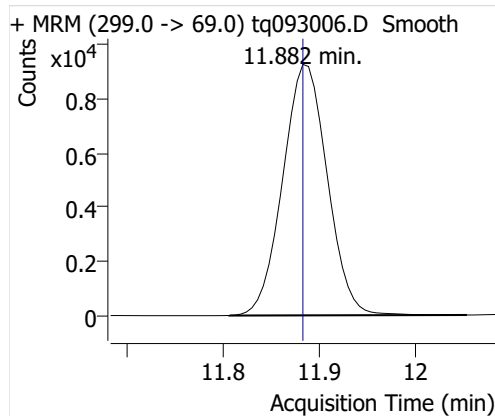


Compound	ISTD	RT	Resp.	ISTD Resp.	Resp. Ratio	Final Conc	Units
4:2 FTOH	6:2 FTOH-C13	11.825	69944	60472	1.1566	2.1042	ng
5:2sFTOH	6:2 FTOH-C13	11.882	29640	60472	0.4902	2.0712	ng
7:2sFTOH	6:2 FTOH-C13	13.183	58249	60472	0.9632	2.0240	ng
6:2 FTOH	6:2 FTOH-C13	13.217	121429	60472	2.0080	1.9887	ng
8:2 FTOH-C13	6:2 FTOH-C13	14.412	21213	60472	0.3508	1.0053	ng
8:2 FTOH	6:2 FTOH-C13	14.413	33887	60472	0.5604	2.0172	ng
10:2 FTOH	6:2 FTOH-C13	15.477	12689	60472	0.2098	2.0082	ng
12:2 FTOH	6:2 FTOH-C13	16.458	47098	60472	0.7788	2.0516	ng
NMeFOSA	6:2 FTOH-C13	18.662	37836	60472	0.6257	2.2308	ng
NEtFOSA	6:2 FTOH-C13	18.931	169837	60472	2.8085	2.2878	ng

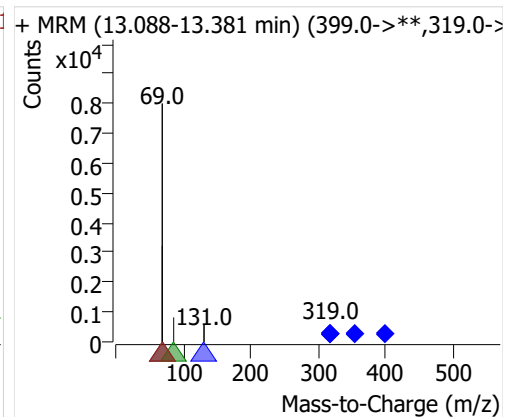
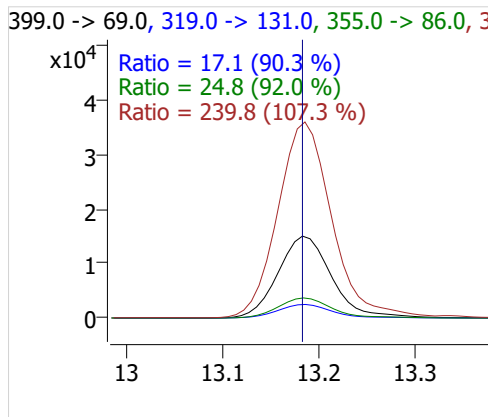
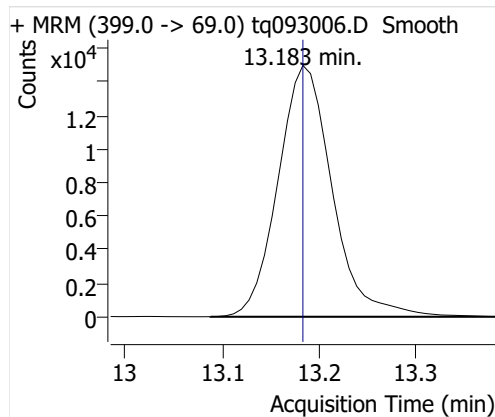
4:2 FTOH



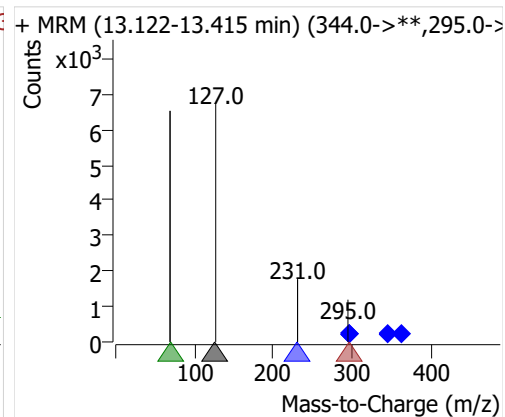
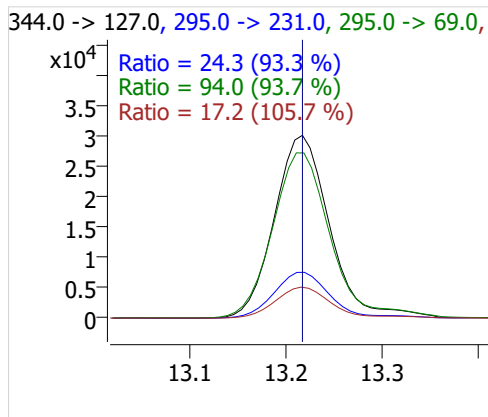
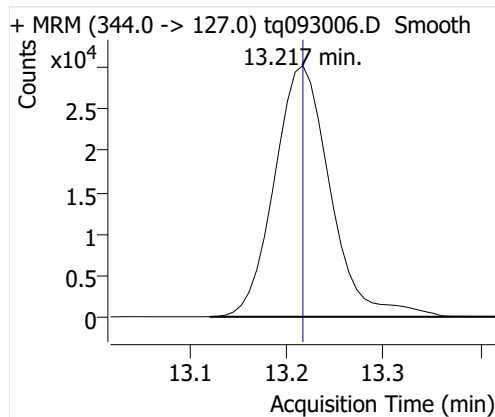
5:2sFTOH



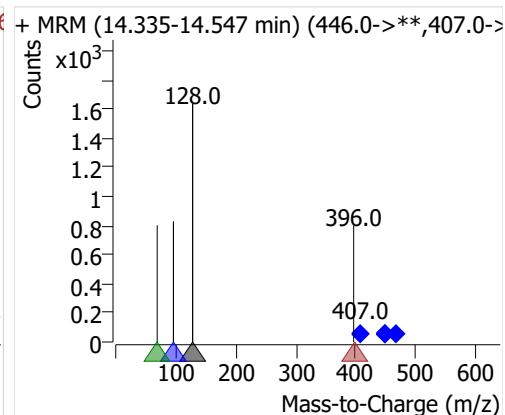
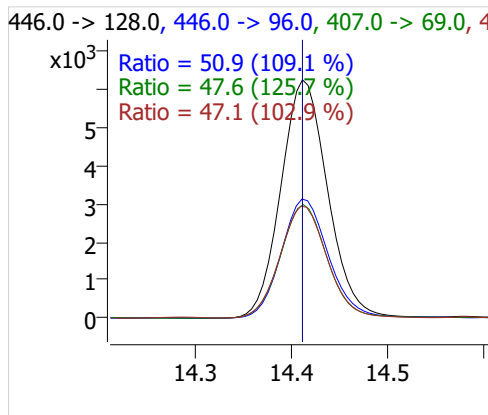
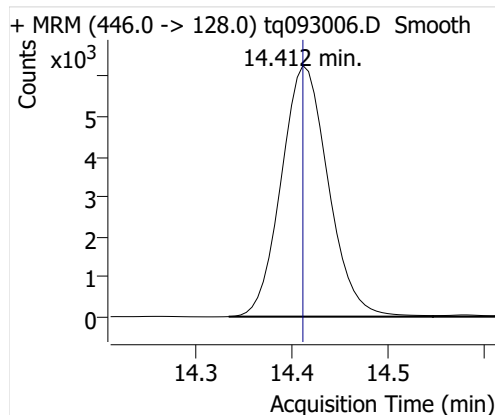
7:2sFTOH



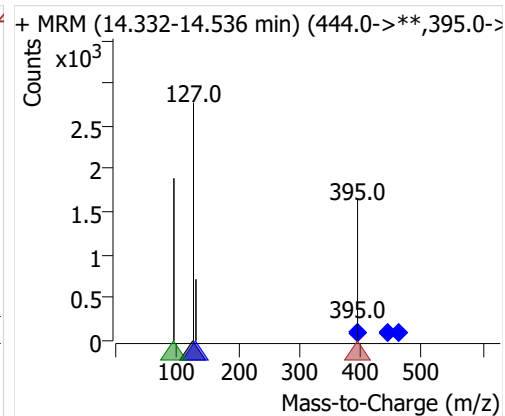
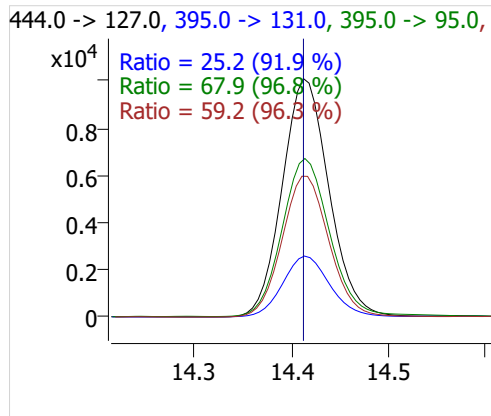
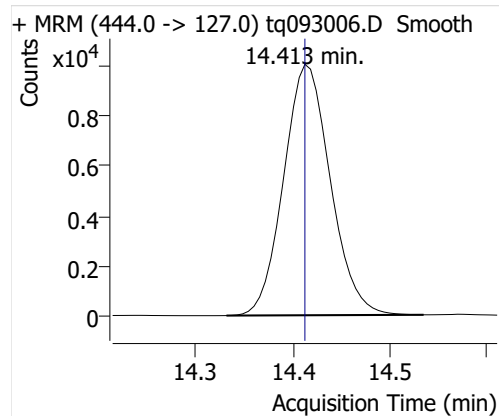
6:2 FTOH



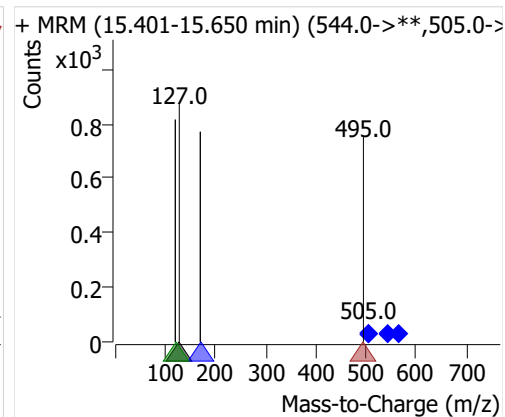
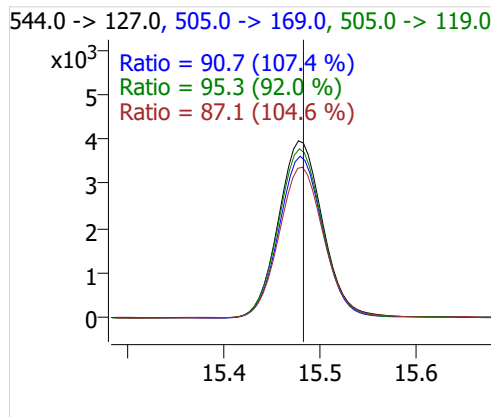
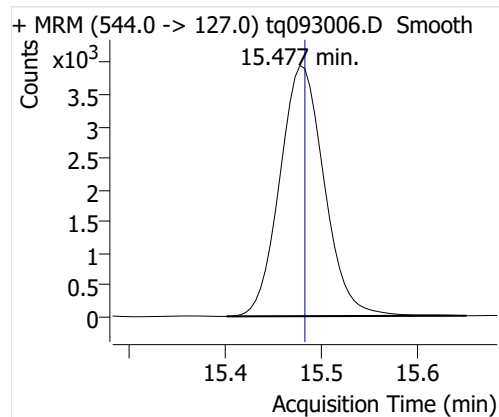
8:2 FTOH-C13



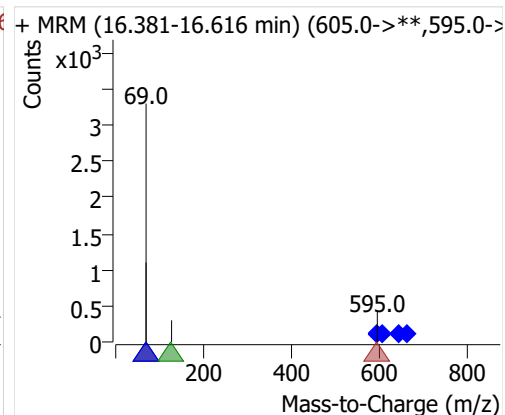
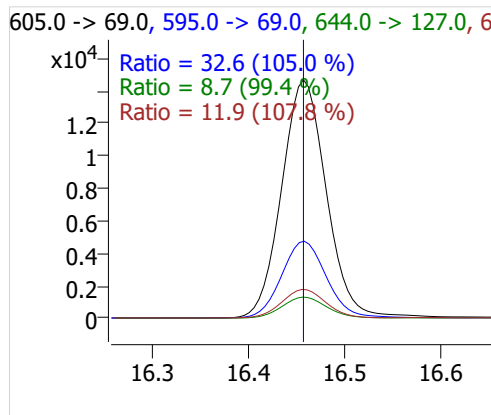
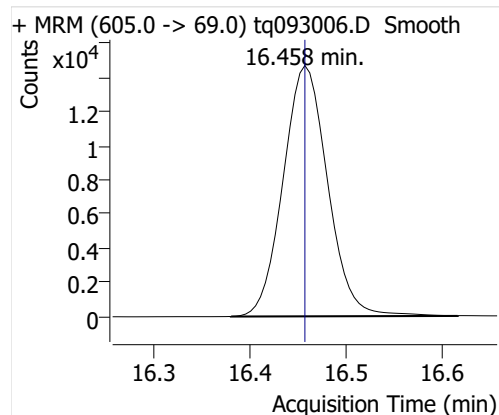
8:2 FTOH



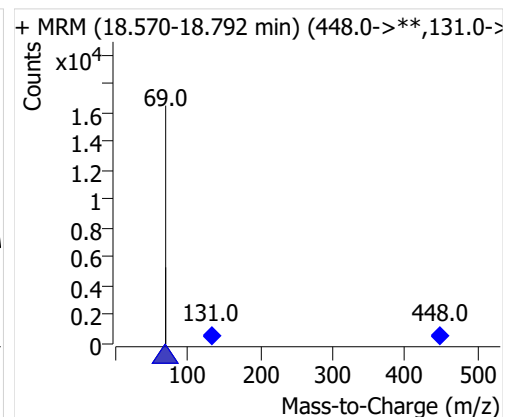
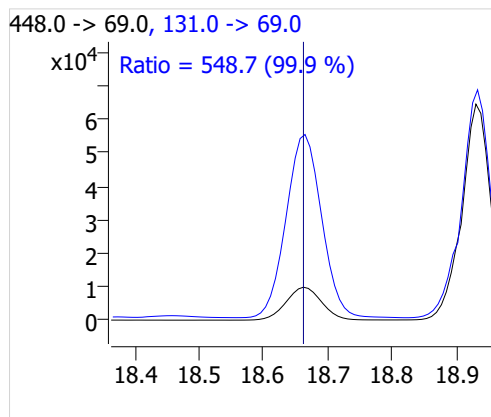
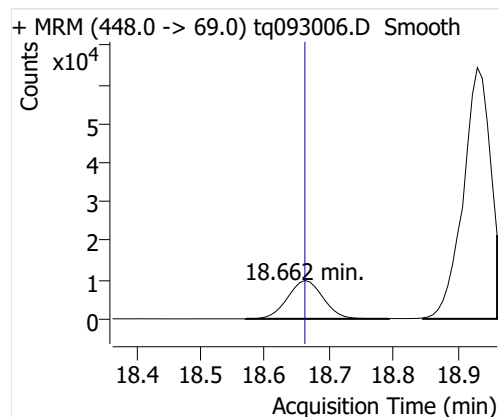
10:2 FTOH



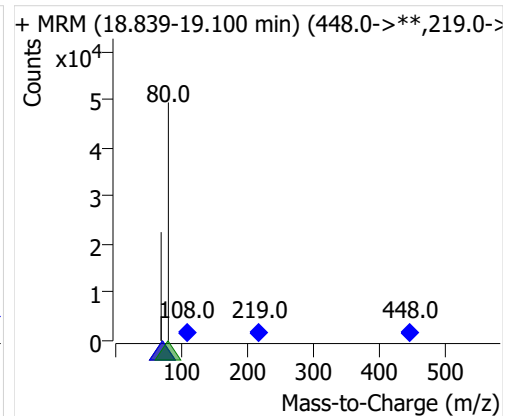
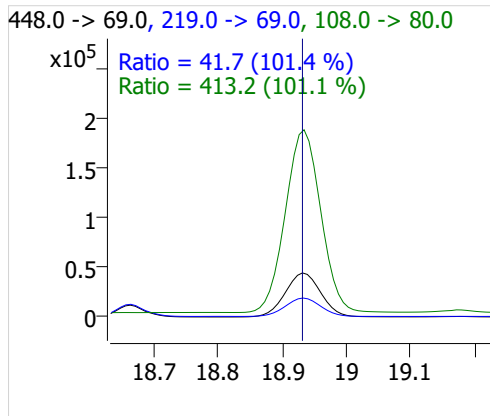
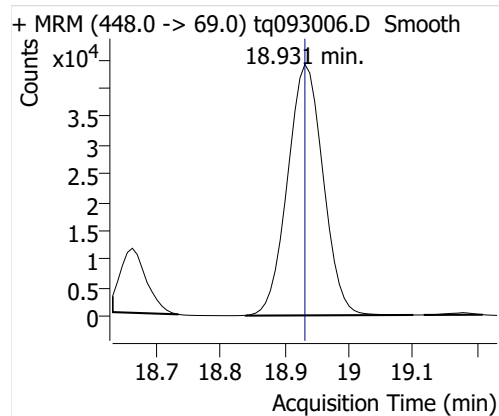
12:2 FTOH



NMeFOSA



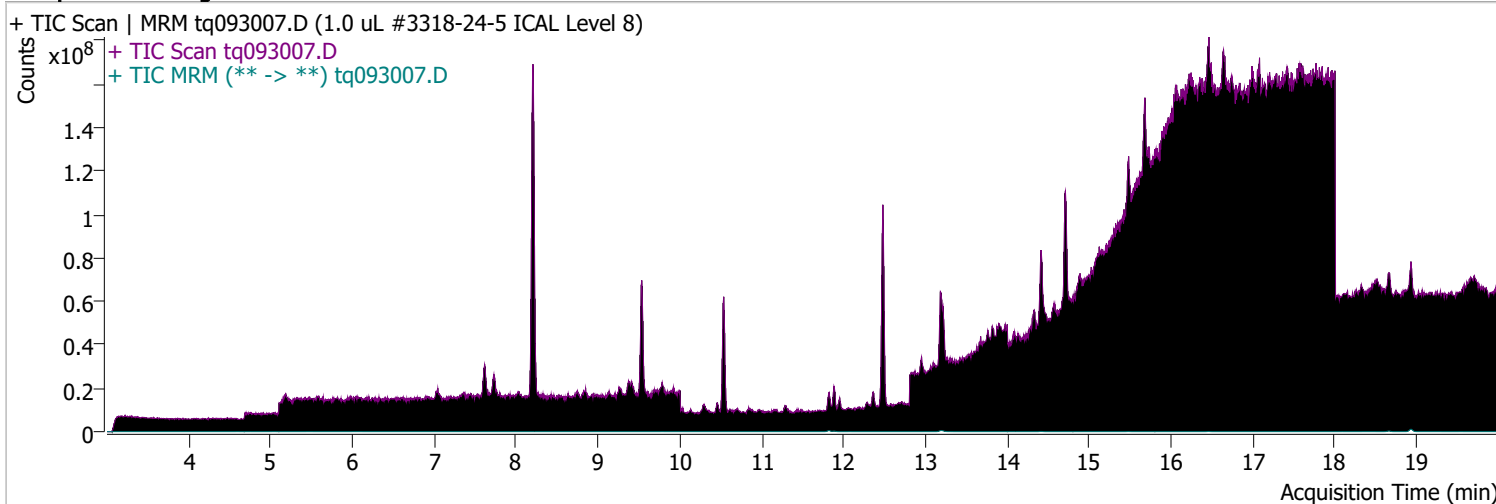
NETFOSA



Quantitative Analysis Sample Report

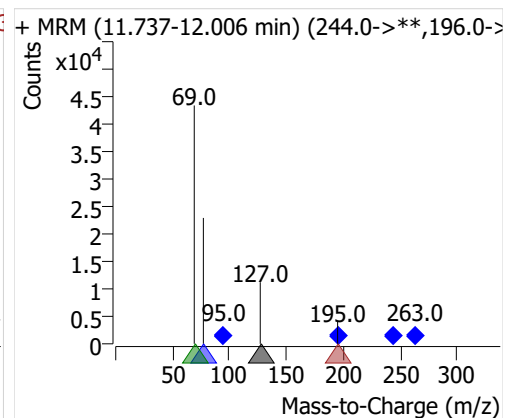
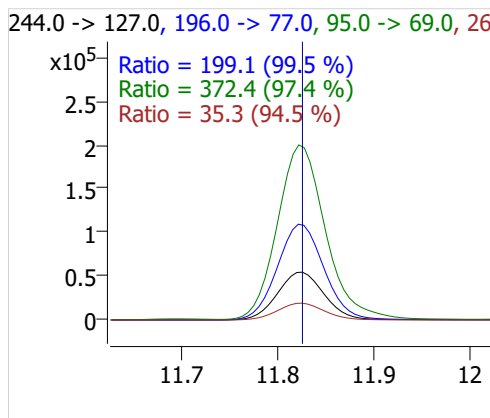
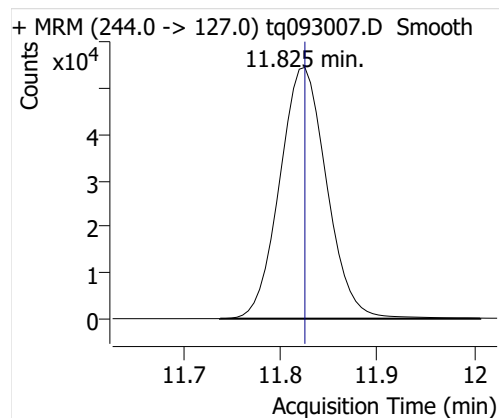
Batch Path D:\MassHunter\GCMS\1\data\30sep22\QuantResults\30sep22.batch.bin
Analysis Time 10/3/2022 10:17 AM **Analyst Name** DESKTOP-R0LAL7E\analyst
Report Time 10/20/2022 2:35:41 PM **Reporter Name** ES-AREA1\US32_USR_INS22923
Last Calib Update 10/3/2022 8:55 AM **Batch State** Processed
Quant Batch Version 10.1 **Quant Report Version** 10.1
Acq. Time 9/30/2022 5:22 PM **Data File** tq093007.D
Sample Type Cal **Sample Name** 1.0 uL #3318-24-5 ICAL Level 8
Dilution 1 **Acq. Method** tq22m0831marks

Sample Chromatogram

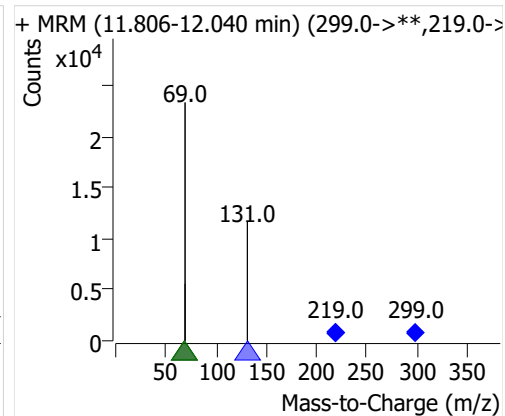
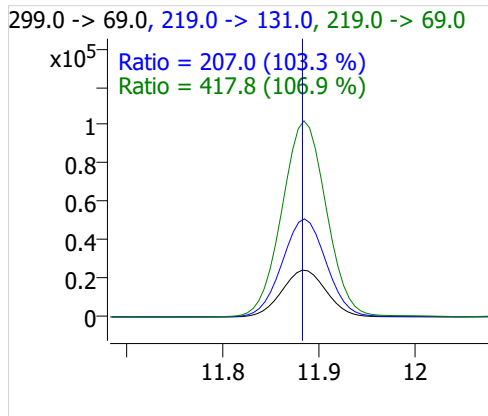
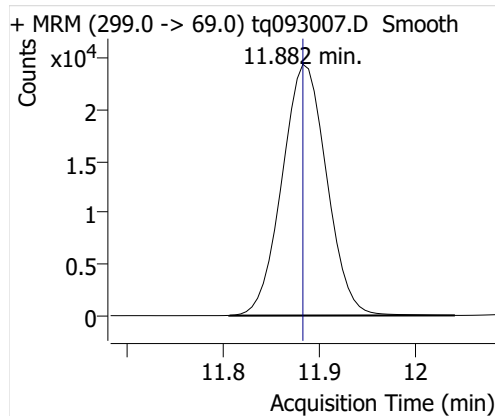


Compound	ISTD	RT	Resp.	ISTD Resp.	Resp. Ratio	Final Conc	Units
4:2 FTOH	6:2 FTOH-C13	11.825	185438	65304	2.8396	5.1659	ng
5:2sFTOH	6:2 FTOH-C13	11.882	78516	65304	1.2023	5.0806	ng
7:2sFTOH	6:2 FTOH-C13	13.183	162653	65304	2.4907	5.2336	ng
6:2 FTOH	6:2 FTOH-C13	13.217	329495	65304	5.0455	4.9970	ng
8:2 FTOH-C13	6:2 FTOH-C13	14.412	23905	65304	0.3661	1.0491	ng
8:2 FTOH	6:2 FTOH-C13	14.413	92284	65304	1.4131	5.0868	ng
10:2 FTOH	6:2 FTOH-C13	15.477	34781	65304	0.5326	5.0973	ng
12:2 FTOH	6:2 FTOH-C13	16.458	130335	65304	1.9958	5.2574	ng
NMeFOSA	6:2 FTOH-C13	18.662	92772	65304	1.4206	5.0650	ng
NEtFOSA	6:2 FTOH-C13	18.931	421861	65304	6.4599	5.2621	ng

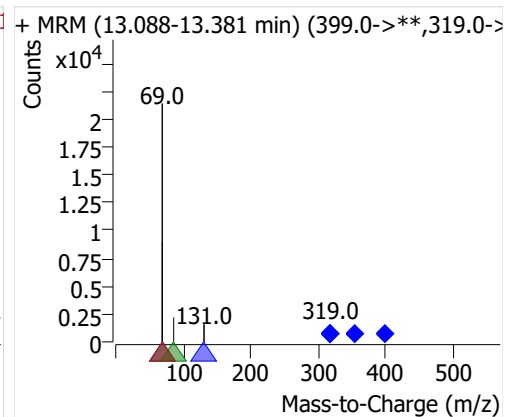
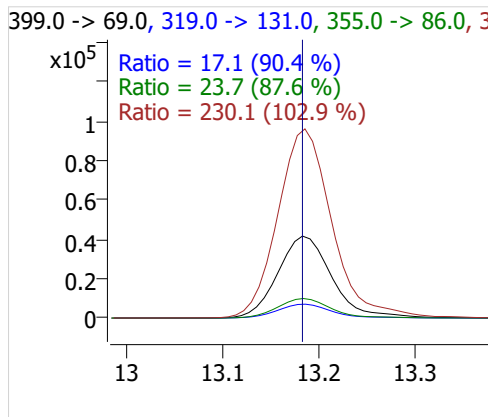
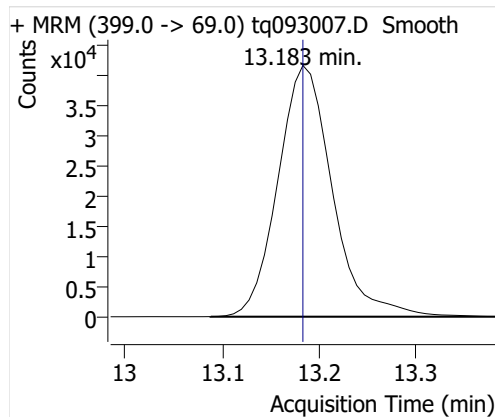
4:2 FTOH



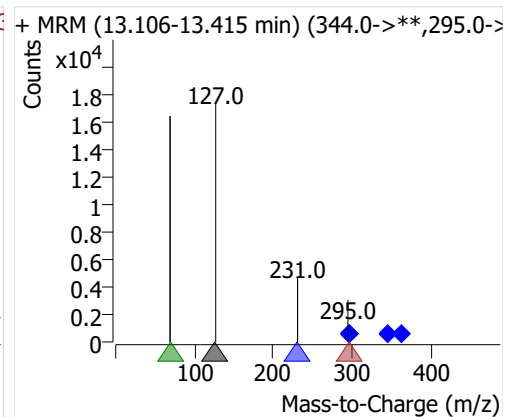
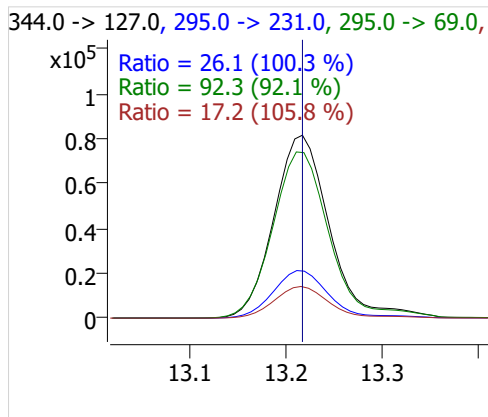
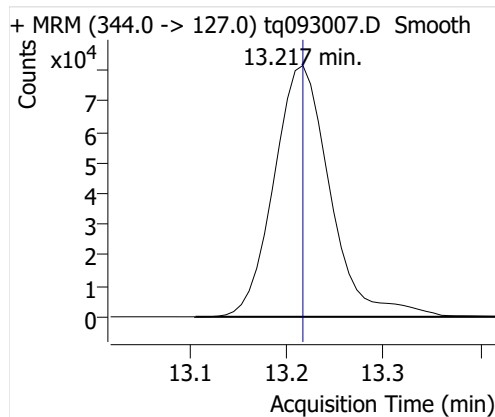
5:2sFTOH



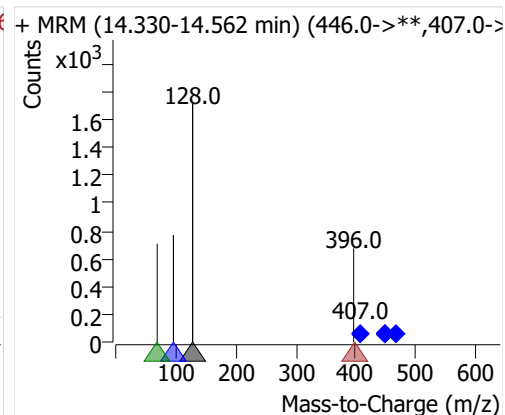
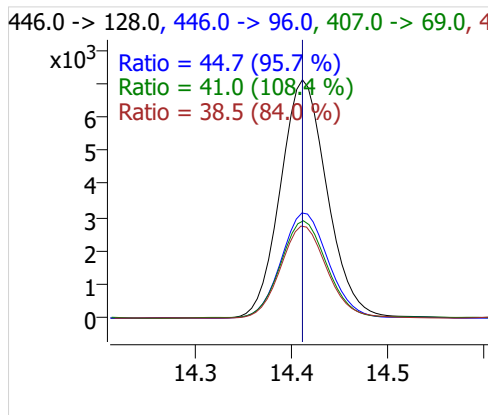
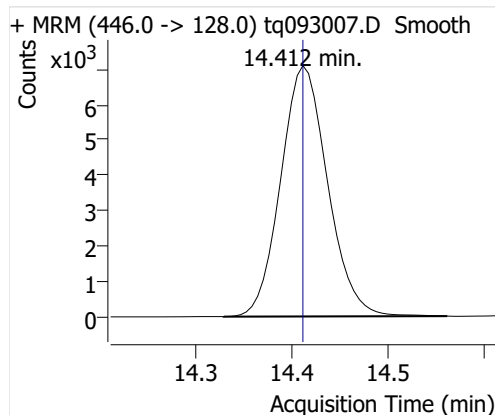
7:2sFTOH



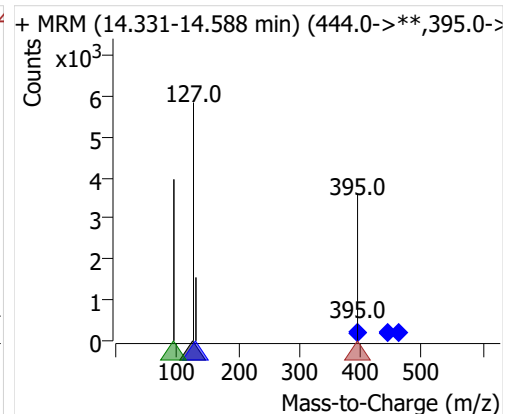
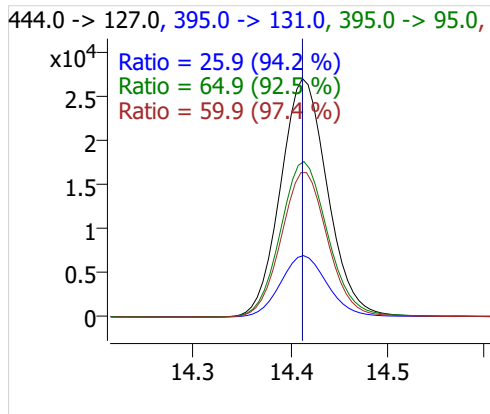
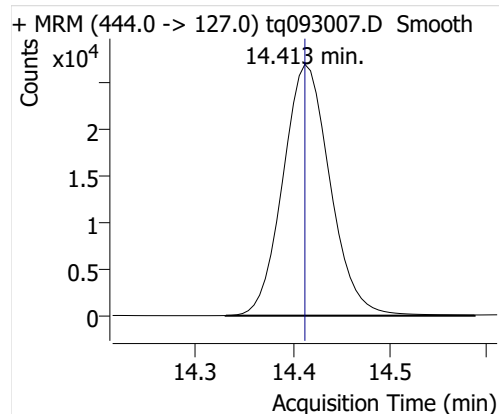
6:2 FTOH



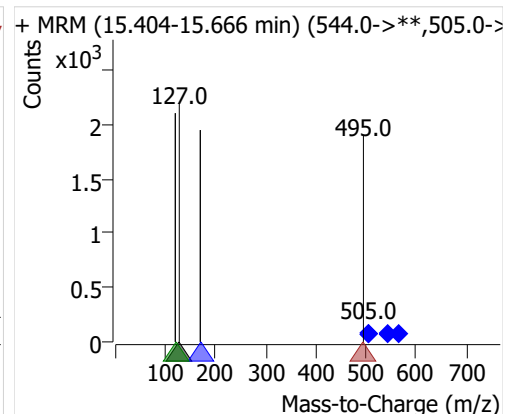
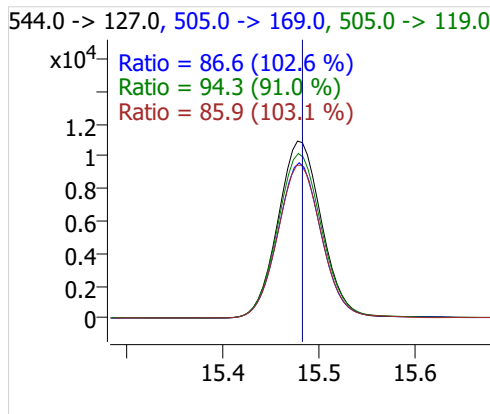
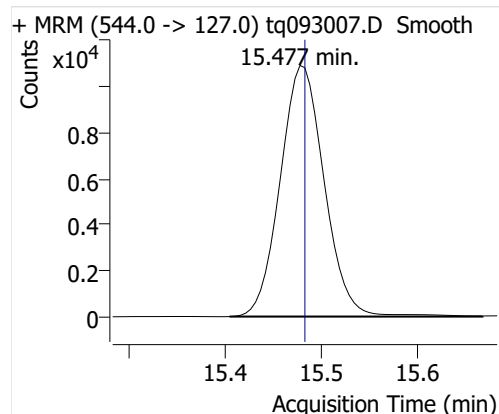
8:2 FTOH-C13



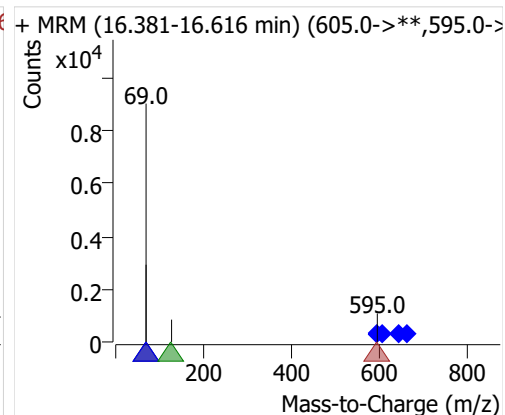
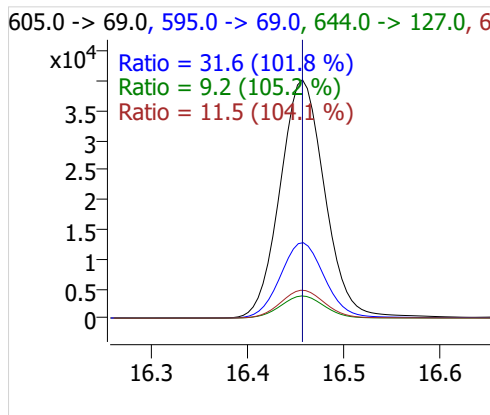
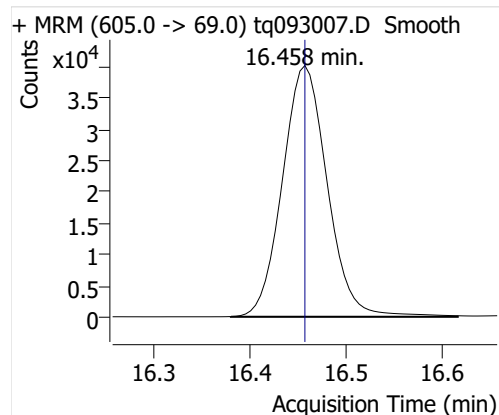
8:2 FTOH



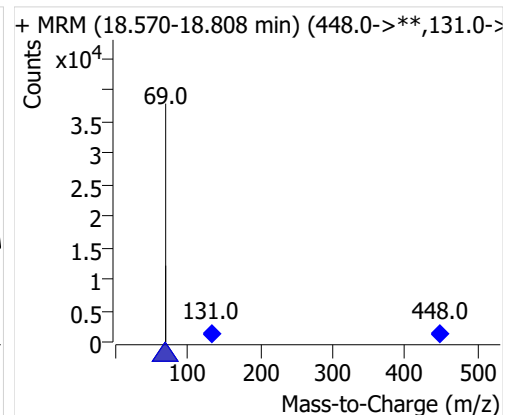
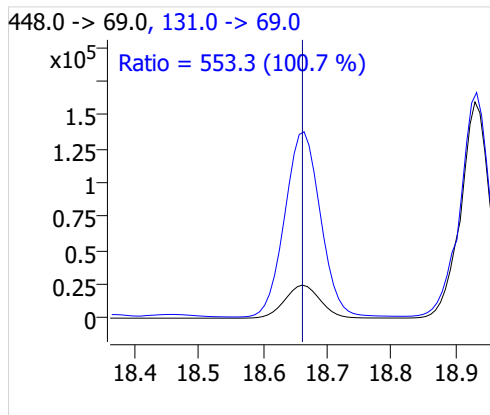
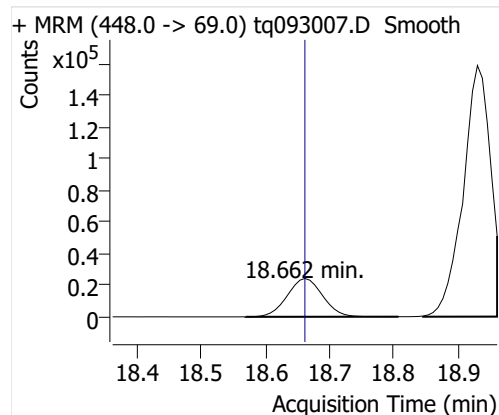
10:2 FTOH



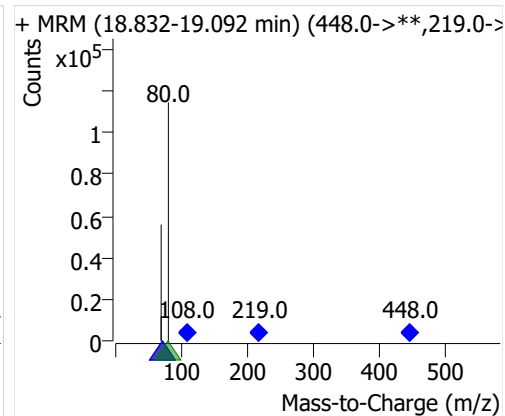
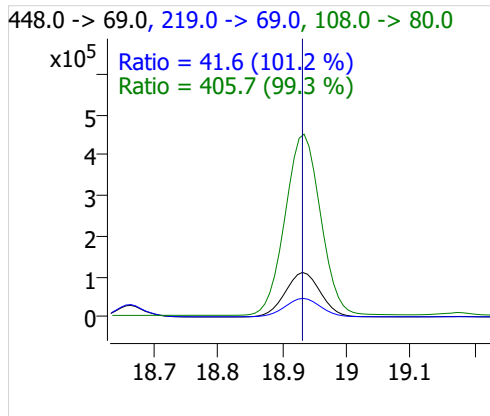
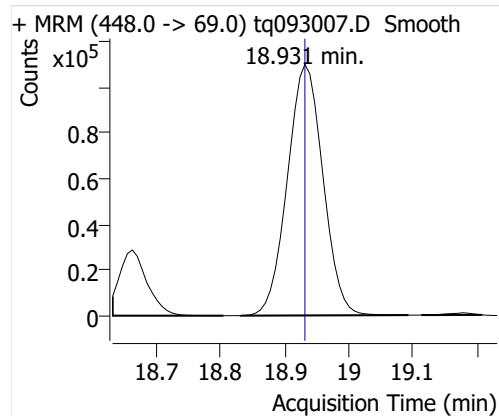
12:2 FTOH



NMeFOSA



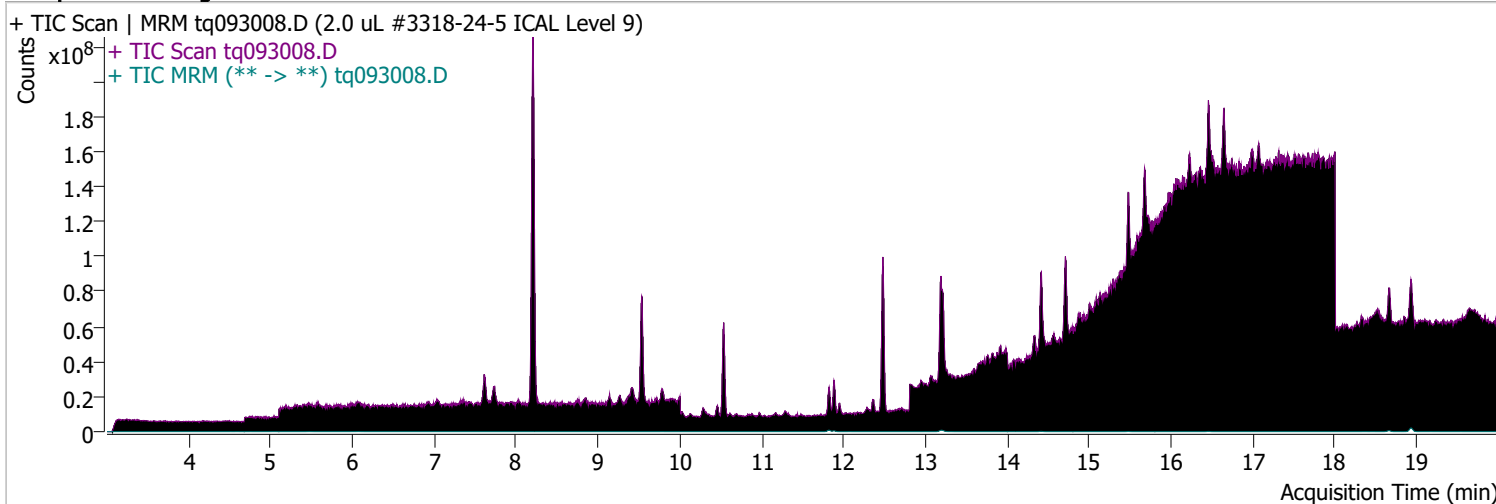
NETFOSA



Quantitative Analysis Sample Report

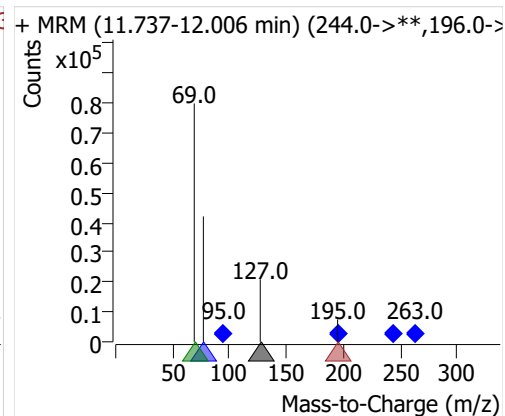
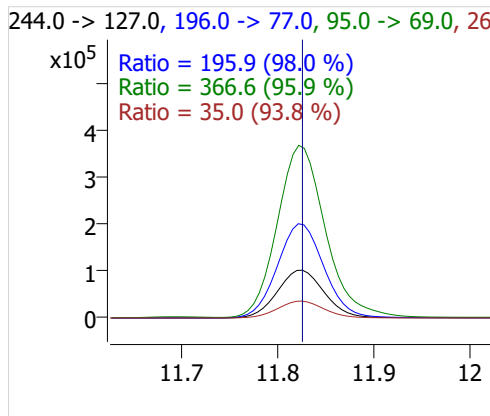
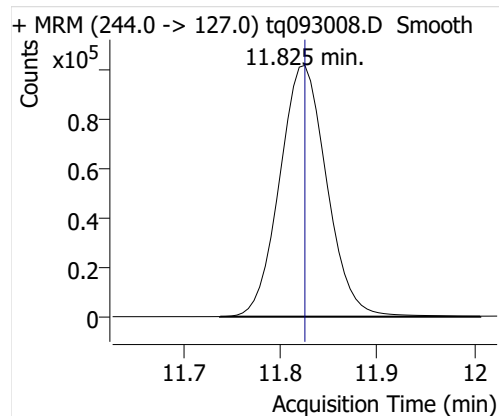
Batch Path D:\MassHunter\GCMS\1\data\30sep22\QuantResults\30sep22.batch.bin
Analysis Time 10/3/2022 10:17 AM **Analyst Name** DESKTOP-R0LAL7E\analyst
Report Time 10/20/2022 2:35:43 PM **Reporter Name** ES-AREA1\US32_USR_INS22923
Last Calib Update 10/3/2022 8:55 AM **Batch State** Processed
Quant Batch Version 10.1 **Quant Report Version** 10.1
Acq. Time 9/30/2022 5:46 PM **Data File** tq093008.D
Sample Type Cal **Sample Name** 2.0 uL #3318-24-5 ICAL Level 9
Dilution 1 **Acq. Method** tq22m0831marks

Sample Chromatogram

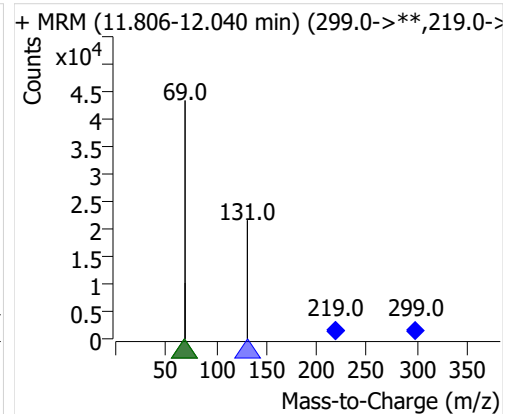
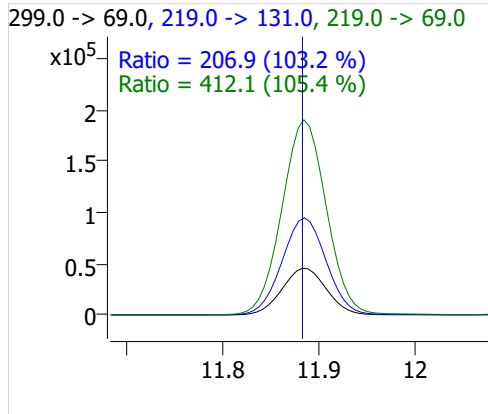
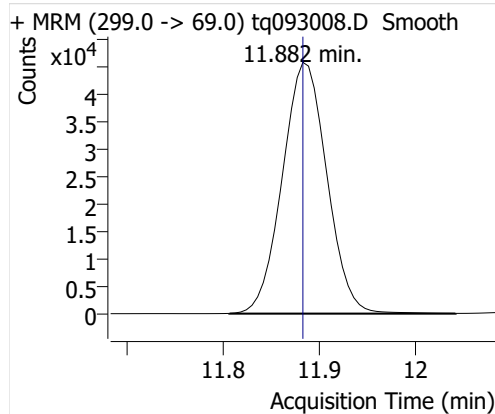


Compound	ISTD	RT	Resp.	ISTD Resp.	Resp. Ratio	Final Conc	Units
4:2 FTOH	6:2 FTOH-C13	11.825	346459	69319	4.9980	9.0925	ng
5:2sFTOH	6:2 FTOH-C13	11.882	146723	69319	2.1166	8.9442	ng
7:2sFTOH	6:2 FTOH-C13	13.183	294500	69319	4.2485	8.9271	ng
6:2 FTOH	6:2 FTOH-C13	13.217	612227	69319	8.8320	8.7469	ng
8:2 FTOH-C13	6:2 FTOH-C13	14.412	23240	69319	0.3353	0.9608	ng
8:2 FTOH	6:2 FTOH-C13	14.413	171334	69319	2.4717	8.8970	ng
10:2 FTOH	6:2 FTOH-C13	15.477	66451	69319	0.9586	9.1745	ng
12:2 FTOH	6:2 FTOH-C13	16.458	247313	69319	3.5677	9.3982	ng
NMeFOSA	6:2 FTOH-C13	18.662	178190	69319	2.5706	9.1650	ng
NEtFOSA	6:2 FTOH-C13	18.931	794633	69319	11.4633	9.3377	ng

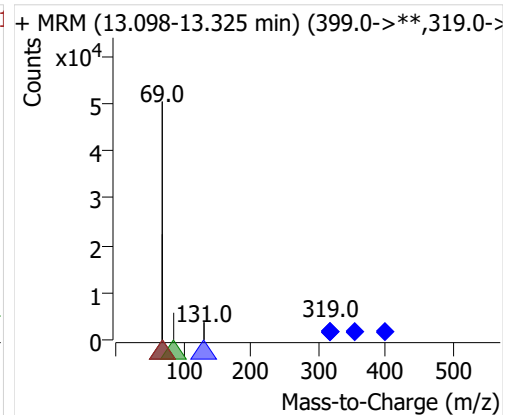
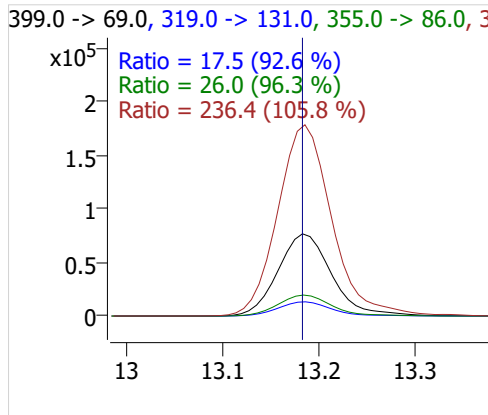
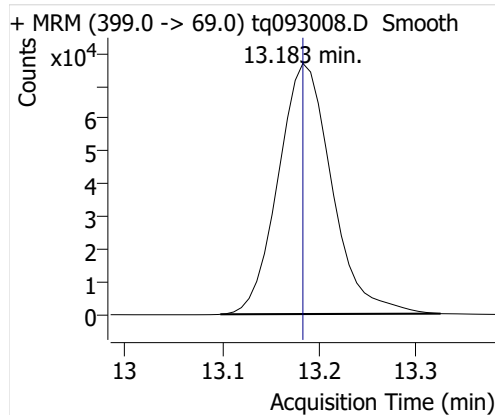
4:2 FTOH



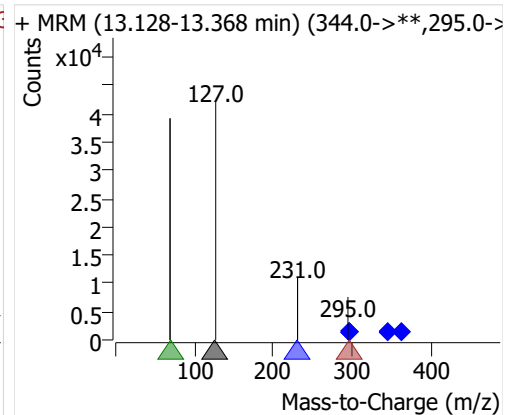
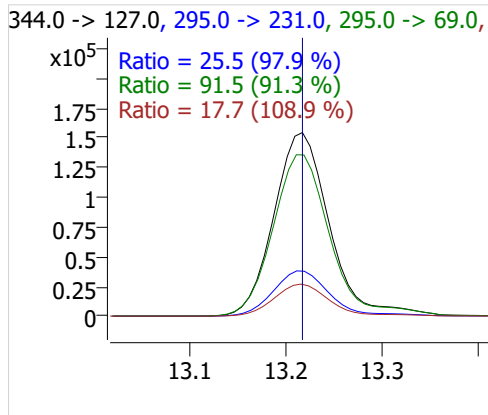
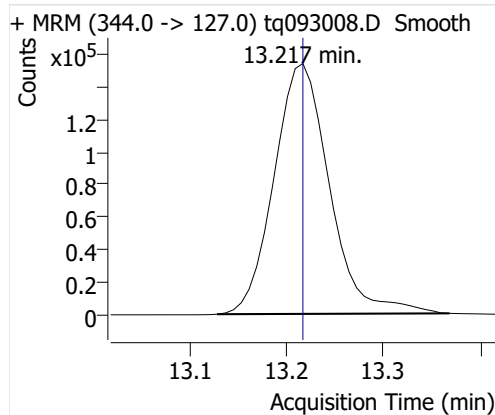
5:2sFTOH



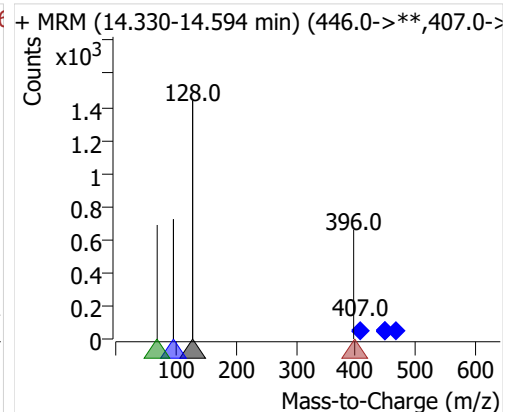
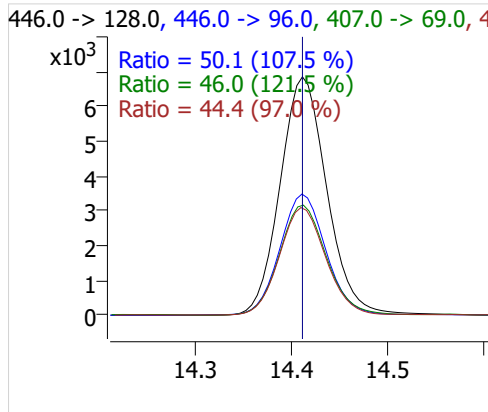
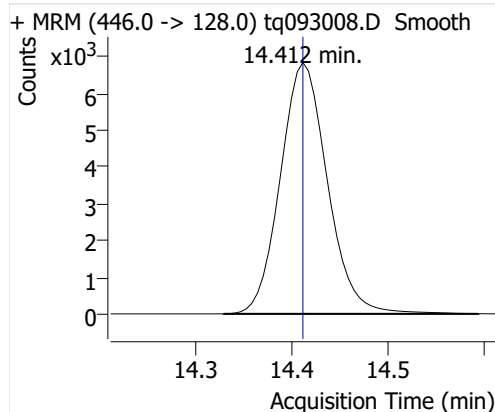
7:2sFTOH



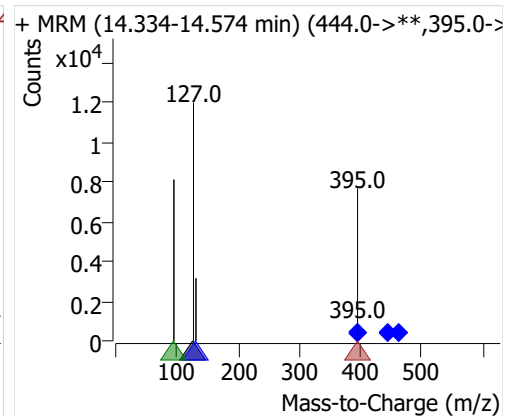
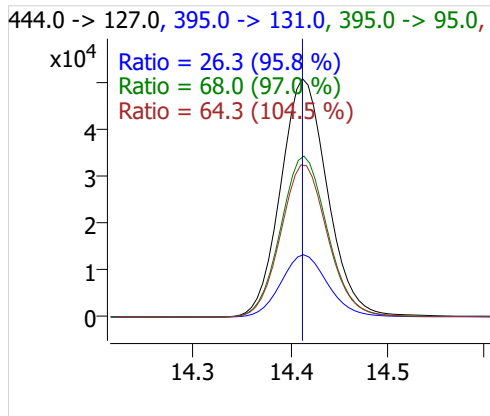
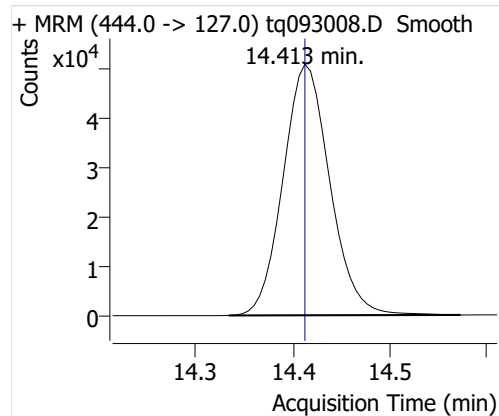
6:2 FTOH



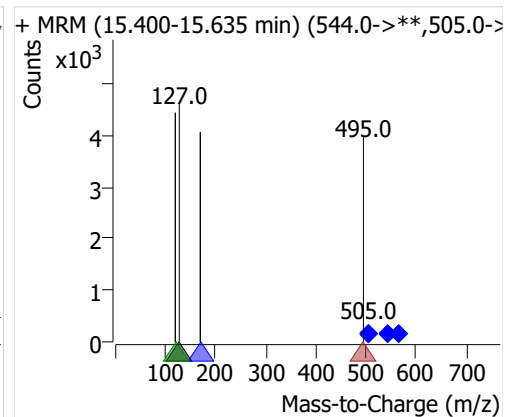
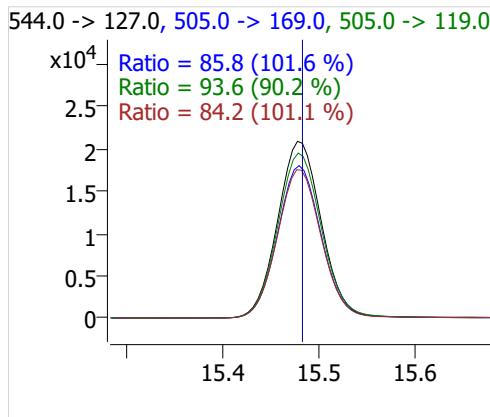
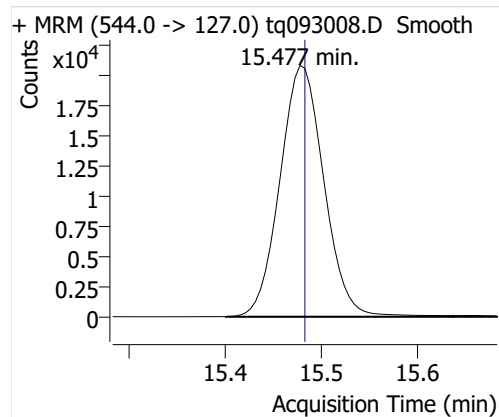
8:2 FTOH-C13



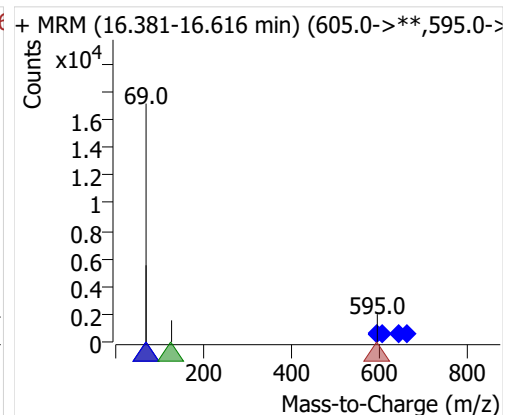
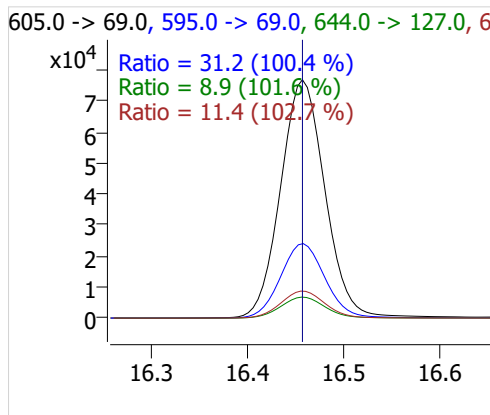
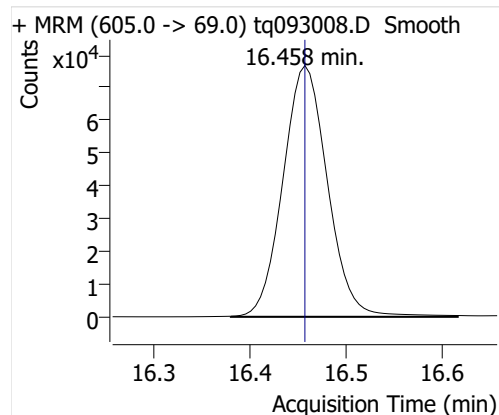
8:2 FTOH



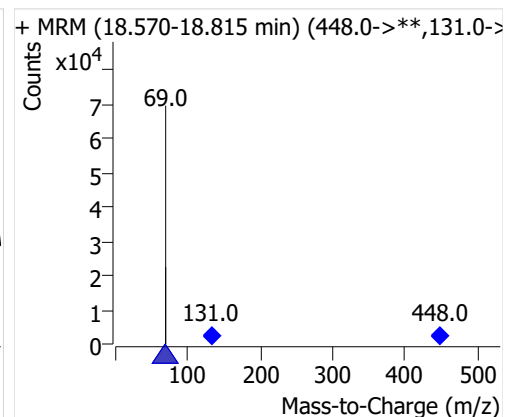
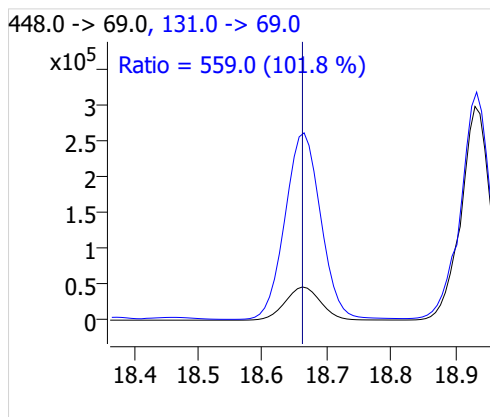
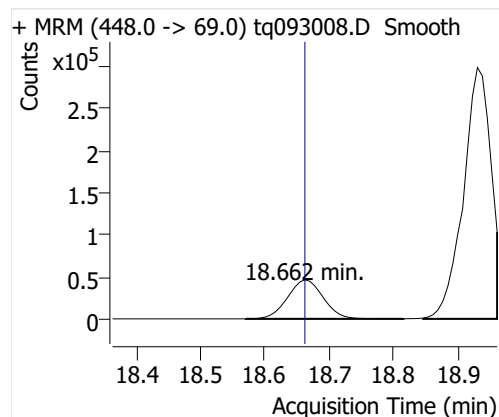
10:2 FTOH



12:2 FTOH



NMeFOSA



NetFOSA

